

DiGi LED Strip RGBTW 100mm 24V

Control every pixel with SPI technology, enabling precise adjustments and flexibility in your lighting design. With control every 100mm, achieve the perfect balance of detail and efficiency, ensuring your lighting solution meets your exact specifications. Unlock the full potential of our DiGi products with the DiGidot C4 controller. Seamlessly control and synchronize your DiGi Strip with ease, allowing for effortless customization and stunning lighting effects.

Key specifications

Voltage	24V DC
Color Range	RGBTW (2400-5500K)
Power Consumption (w/m)	20
Luminous Flux (lm/m)	1196lm (RGBTW)
LED Quantity (p/m)	60
Pixels (p/m)	10
Pixel pitch (mm)	100
Control	SPI
Cutting interval (mm)	100
Length (m)	5 (default length)



CE

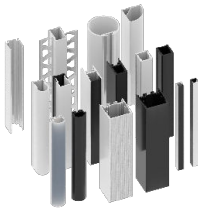
RoHS

IP20

Ordering information

Cable Length in CM	LED Strip Length in CM	Qty
<input type="text"/>	<input type="text"/>	<input type="text"/>
<input type="text"/>	<input type="text"/>	<input type="text"/>
<input type="text"/>	<input type="text"/>	<input type="text"/>
<input type="text"/>	<input type="text"/>	<input type="text"/>

Related Items



DiGidot C4 Live			
<input type="checkbox"/>	<input type="checkbox"/>	DiGidot C4 Live 4	20101
<input type="checkbox"/>	<input type="checkbox"/>	DiGidot C4 Live 8	20102
<input type="checkbox"/>	<input type="checkbox"/>	DiGidot C4 Live 12	20103
<input type="checkbox"/>	<input type="checkbox"/>	DiGidot C4 Live 16	20104
DiGidot C4 Extended			
<input type="checkbox"/>	<input type="checkbox"/>	DiGidot C4 Extended 1	20201
<input type="checkbox"/>	<input type="checkbox"/>	DiGidot C4 Extended 2	20202
<input type="checkbox"/>	<input type="checkbox"/>	DiGidot C4 Extended 4	20203
<input type="checkbox"/>	<input type="checkbox"/>	DiGidot C4 Extended 8	20204
DiGidot PxLNode			
<input type="checkbox"/>	<input type="checkbox"/>	DiGidot PxLNode U96	20820
DiGidot PxLNet Transceiver kit			
<input type="checkbox"/>	<input type="checkbox"/>	DiGidot PxLNet Transceiver kit RJ45-Bus	20341
<input type="checkbox"/>	<input type="checkbox"/>	DiGidot PxLNet Transceiver kit Screw	203402
<input type="checkbox"/>	<input type="checkbox"/>	DiGidot PxLNet Transceiver kit Solder	203403

LED Profiles and covers			
<input type="checkbox"/>	<input type="checkbox"/>	Aluminum LED Profile Half Round	9116300
<input type="checkbox"/>	<input type="checkbox"/>	Aluminum LED Profile High	9111300
<input type="checkbox"/>	<input type="checkbox"/>	Aluminum LED Profile Low	9112300
<input type="checkbox"/>	<input type="checkbox"/>	Aluminum LED Profile Plaster	9510300
<input type="checkbox"/>	<input type="checkbox"/>	Aluminum LED Corner	9711300
<input type="checkbox"/>	<input type="checkbox"/>	Aluminum LED Profile H	9411310
<input type="checkbox"/>	<input type="checkbox"/>	Aluminum LED Profile 3535	9310300
Please contact our sales team for more info and options			

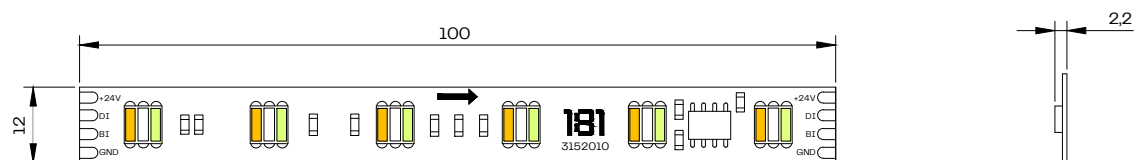
Meanwell Power supply		
<input type="checkbox"/>	<input type="checkbox"/>	XLG-75-24 8343100
<input type="checkbox"/>	<input type="checkbox"/>	XLG-100-24 8343300
<input type="checkbox"/>	<input type="checkbox"/>	HLG-150-24 8440700
<input type="checkbox"/>	<input type="checkbox"/>	HLG-240-24 8441600
<input type="checkbox"/>	<input type="checkbox"/>	HLG-320-24 8442500

General specifications

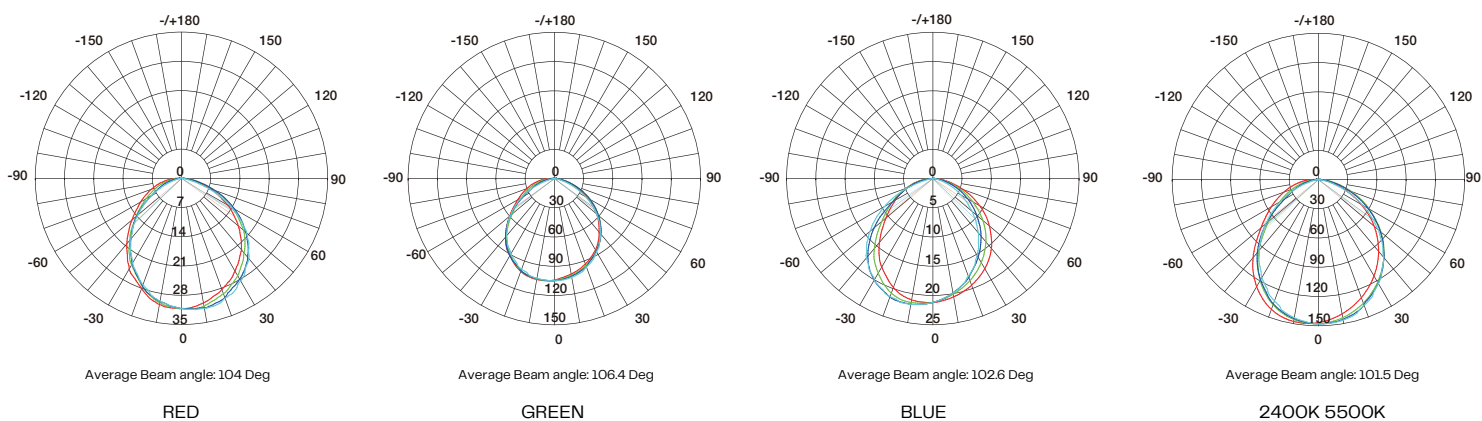
Operating Voltage	24V DC
Color range	RGBTW (2400-5500K)
Power Consumption (w/m)	20
Luminous Flux (p/m)	1196Lm (RGBTW)
Luminous Efficacy (Lm/W)	59
CRI	≥80
LED Type	SMD5050 5in1
LED Quantity (p/m)	60
Max Run Front power feed (m)	5
Max Run Middle power feed (m)	10
Max Run Data (m)	50 @30 FPS
Control	SPI
Channels (p/m)	50
Pixel Pitch (mm)	100
LED Pitch (mm)	16.67
IC Type	WS2805 ¹
Storage Temperature	-40° C to 80° C
Operating Temperature	-25° C to 60° C
Connection type	Bare wires (default)
Ingress Protection	IP20
Environment	Indoor
Mounting Option	3M 300LSE
Certifications	CE, RoHS
PCB Color	White
Weight (gr, 5m reel)	160
Dimensions (mm)	5000 x 12 x 2.2
Package Dimensions (cm)	21.5 x 24 x 1.5
Warranty	2 Years

¹ When controlling with DiGidot C4 Live or Extended select IC TM1824.
Generating or adjusting scenes within the C4 is not currently functional.

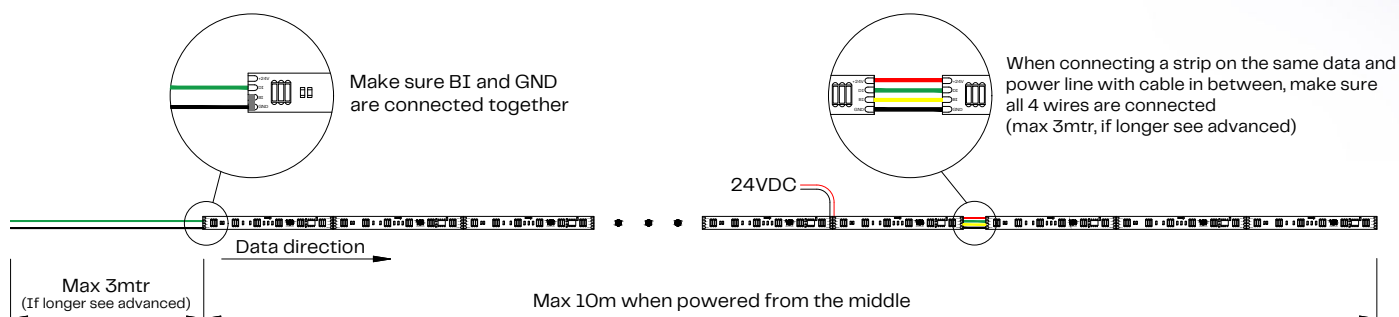
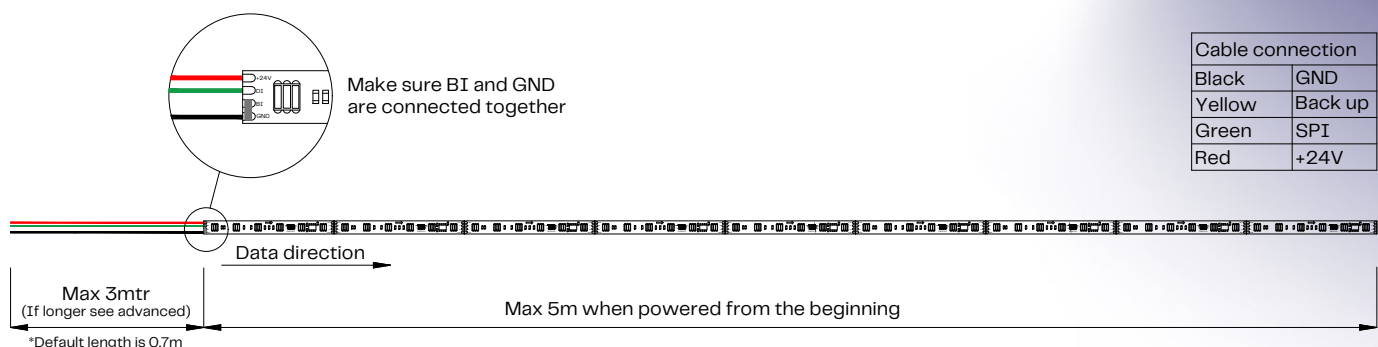
Dimensions



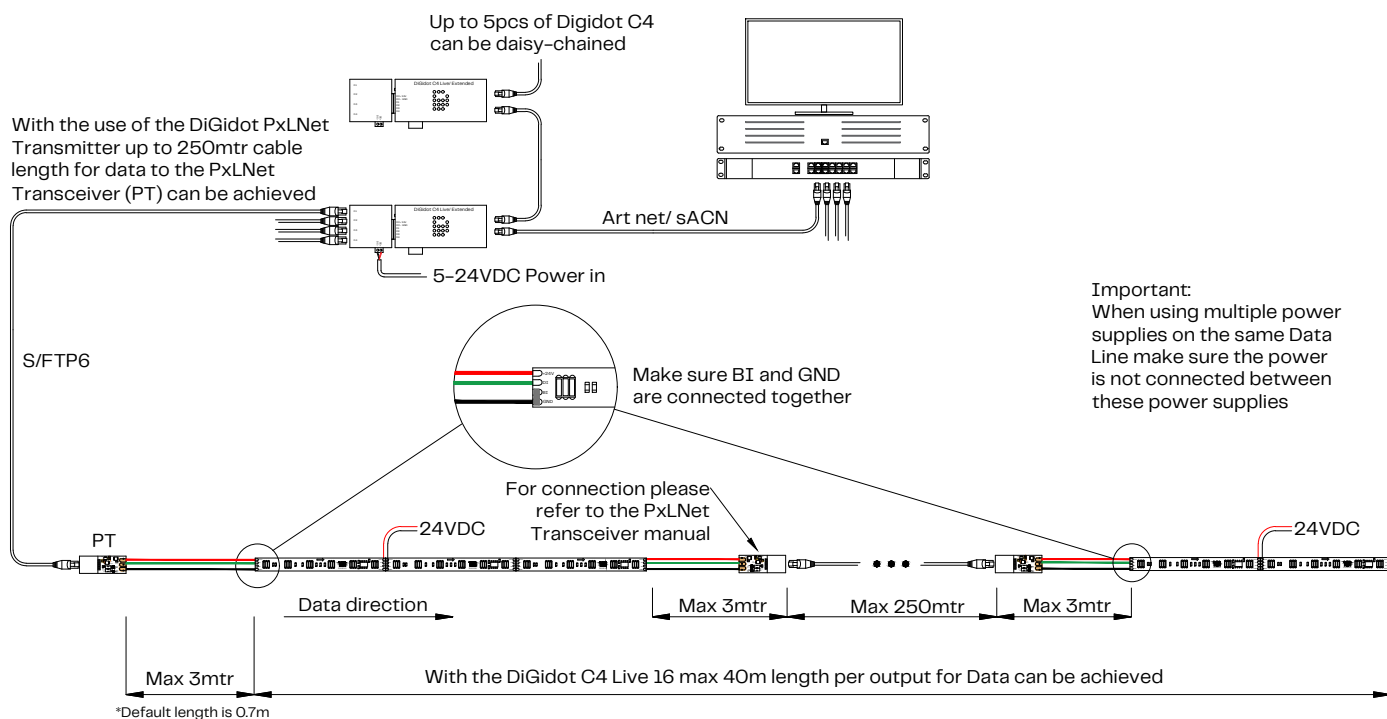
Light distribution



System diagram basic



System diagram advanced



Installation guide

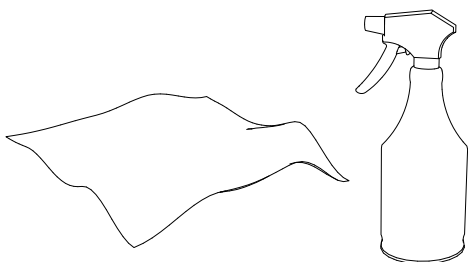
Important note:

- Make sure power is disconnected during installation or maintenance.
- Keep cables and the LED Strip protected from sharp objects to prevent damage
- Align polarity when connecting the LED Strip.
- Do not bend or twist the LED Strip otherwise as specified below

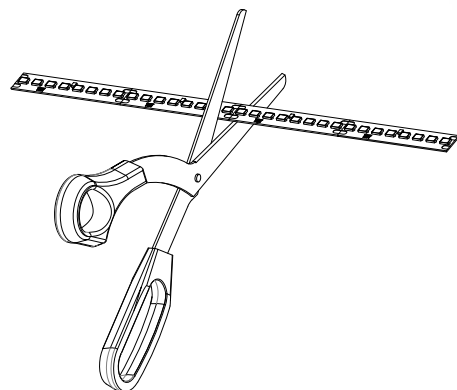
Tips:

- Before powering the system, check if all polarities are aligned.
- It's recommended to install longer lengths with two persons.
- Use 3M Primer on the mounting surface for better bonding.

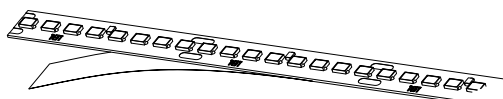
1.
Prepare the mounting surface by removing dirt, debris or moisture.



2.
The LEDstrip can be cut to size at the indicated cutting intervals.



3.
Remove the backing by peeling it off.



4.
Fix onto the surface by gently pushing the LEDstrip. Make sure no air pockets will form underneath the LEDstrip.

