

## LED Strip RGBTW

Discover the ultimate in customizable lighting with our 24V LEDstrip RGBTW, designed to bring vibrant colors and perfect ambiance to any setting. We recommend using LTECH controllers for optimal performance. This LED strip is controllable by PWM, offering you precise dimming and color control. We offer custom lengths with a minimum size of 62.5mm to meet your unique requirements.

### Key specifications

Voltage	24V DC
Color Range	RGBTW (2400-5500K)
Power Consumption (w/m)	24
Luminous Flux (lm/m)	1416Lm (RGBTW)
LED Quantity (p/m)	96 SMD2835 + 192 SMD2216
CRI	≥90
LED pitch (mm)	10.2
Control	PWM
Cutting interval (mm)	62.5
Length (m)	5 (default length)
Cable Length (cm)	70 (default length)



CE

RoHS

IP20

### Ordering information

Cable Length in CM	LED Strip Length in CM	Qty
<input type="text"/>	<input type="text"/>	<input type="text"/>
<input type="text"/>	<input type="text"/>	<input type="text"/>
<input type="text"/>	<input type="text"/>	<input type="text"/>
<input type="text"/>	<input type="text"/>	<input type="text"/>
<input type="text"/>	<input type="text"/>	<input type="text"/>

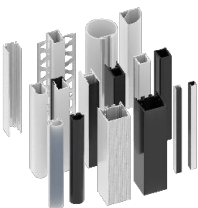
### Related Items



#### LTECH

##### LTECH DMX

- ☐ ☐
- LED Decoder DMX OLED 5x5A    2279000
- 
- ☐ ☐
- LED Decoder DMX OLED 24x3A    2279200
- 
- ☐ ☐
- LED Decoder DMX OLED 32x3A    2279300



##### LED Profiles and covers

- ☐ ☐
- Aluminum LED Profile Half Round    9116300
- 
- ☐ ☐
- Aluminum LED Profile High    9111300
- 
- ☐ ☐
- Aluminum LED Profile Low    9112300
- 
- ☐ ☐
- Aluminum LED Profile Plaster    9510300
- 
- ☐ ☐
- Aluminum LED Corner    9711300
- 
- ☐ ☐
- Aluminum LED Profile H    9411310
- 
- ☐ ☐
- Aluminum LED Profile 3535    9310300



##### Meanwell Power supply

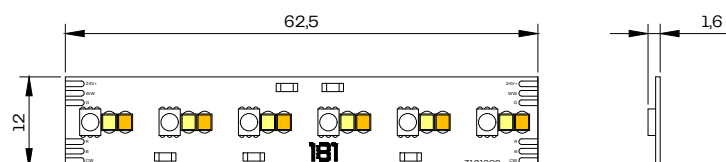
- ☐ ☐
- XLG-75-24    8343100
- 
- ☐ ☐
- XLG-100-24    8343300
- 
- ☐ ☐
- HLG-150-24    8440700
- 
- ☐ ☐
- HLG-240-24    8441600
- 
- ☐ ☐
- HLG-320-24    8442500

Please contact our sales team for more info and options

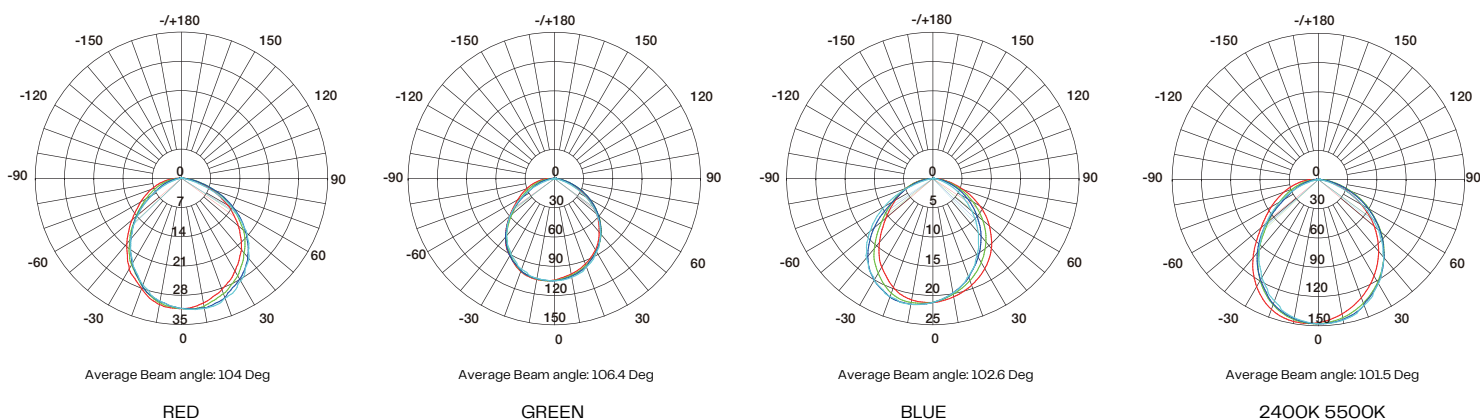
## General specifications

Operating Voltage	24V DC
Color range	RGBTW (2400-5500K)
Power Consumption (w/m)	24
Luminous Flux (p/m)	1416Lm (RGBTW)
Luminous Efficacy (Lm/W)	59
CRI	≥90
LED Type RGB	SMD2835
LED Type White	SMD2216
LED Quantity RGB (p/m)	96
LED Quantity 5500K (p/m)	96
LED Quantity 2400K (p/m)	96
Max Run Single power feed (m)	5
Max Run Double power feed (m)	10
Control	PWM
LED Pitch (mm)	10.2
TM-21 Projection	L70 @ 85°C (LM80-08)
Calculated / reported (H)	Reported 36.000, Calculated 60.000
Storage Temperature	-40° C to 80° C
Operating Temperature	-25° C to 60° C
Connection type	Bare wires (default)
Ingress Protection	IP20
Environment	Indoor
Mounting Option	3M 300LSE
Certifications	CE, RoHS
Safety Standards	EN 62031, IEC 62471, EN60598-1:2015
PCB Color	White
Weight (gr/5m reel)	150
Dimensions (mm)	5000 x 12 x 1.6
Package Dimensions (cm)	21.5 x 24 x 1.5
Warranty	5 Years

## Dimensions



## Light distribution

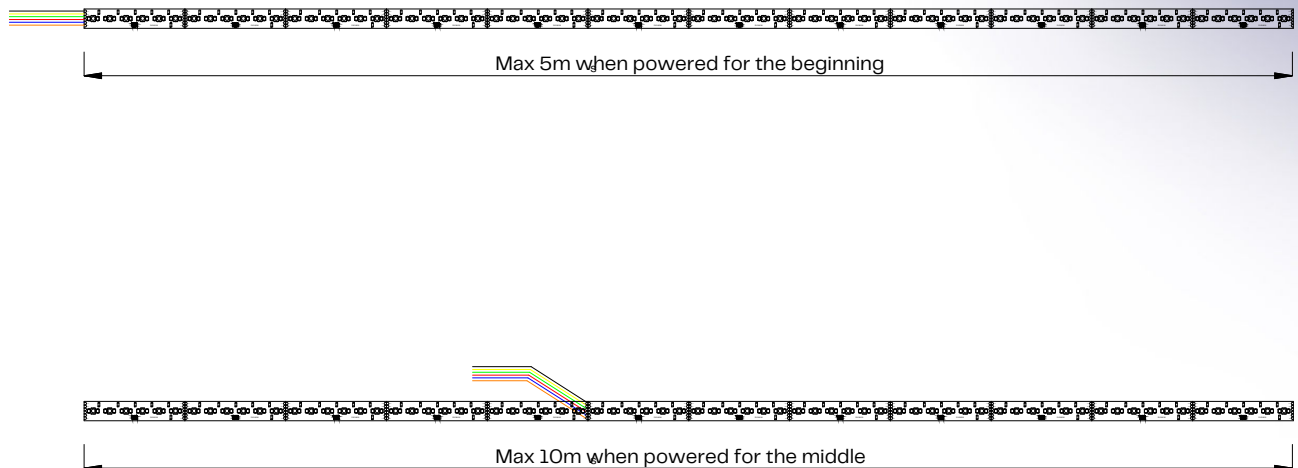


Model	Red	Green	Blue	2400K	5500K
RGBWW	138Lm	374Lm	78Lm	390Lm	436Lm

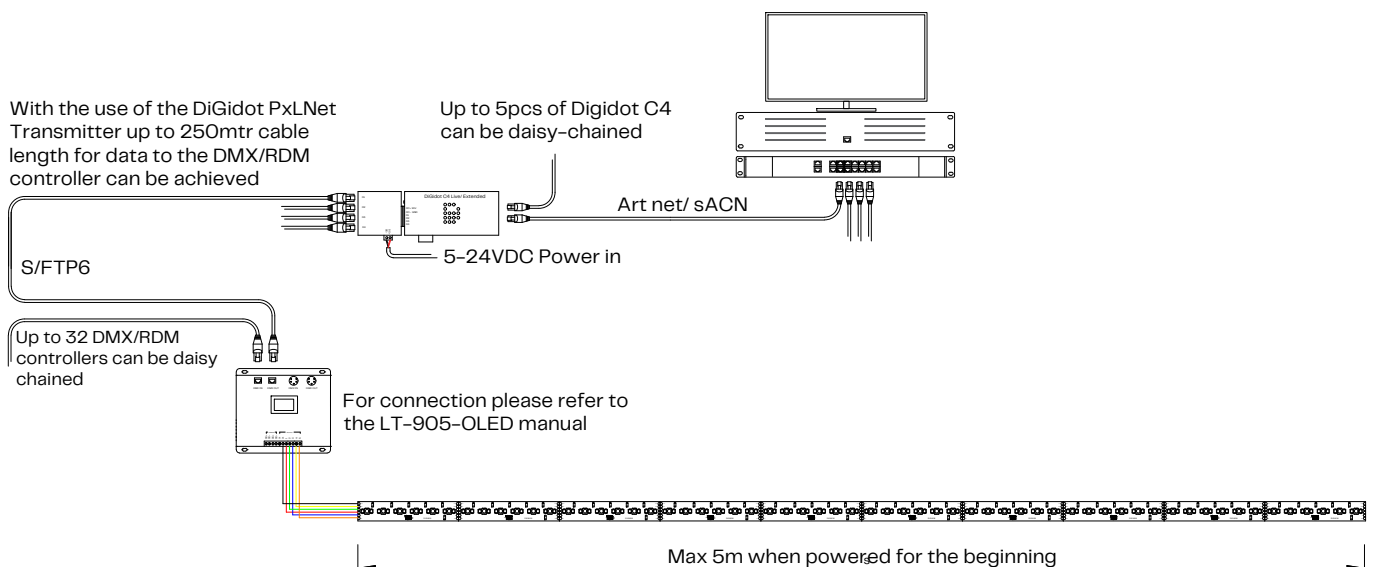
  

Model	Red	Green	Blue
RGBWW	620NM	520NM	465NM

## System diagram basic



## System diagram advanced



## Installation guide

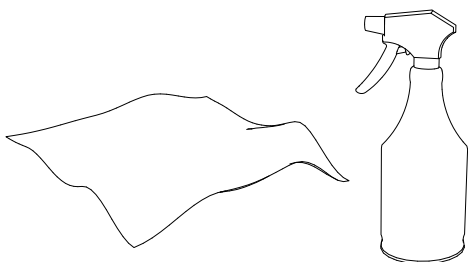
### Important note:

- Make sure power is disconnected during installation or maintenance.
- Keep cables and the LED Strip protected from sharp objects to prevent damage
- Align polarity when connecting the LED Strip.
- Do not bend or twist the LED Strip otherwise as specified below

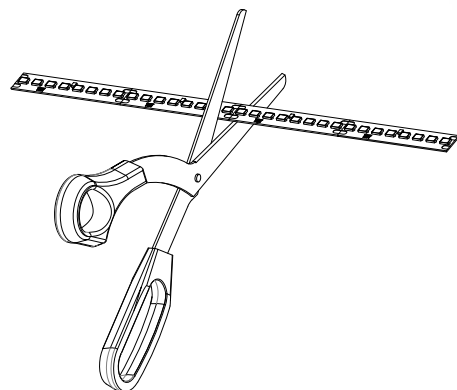
### Tips:

- Before powering the system, check if all polarities are aligned.
- It's recommended to install longer lengths with two persons.
- Use 3M Primer on the mounting surface for better bonding.

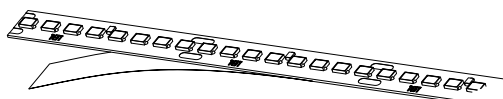
1.  
Prepare the mounting surface by removing dirt, debris or moisture.



2.  
The LEDstrip can be cut to size at the indicated cutting intervals.



3.  
Remove the backing by peeling it off.



4.  
Fix onto the surface by gently pushing the LEDstrip. Make sure no air pockets will form underneath the LEDstrip.

