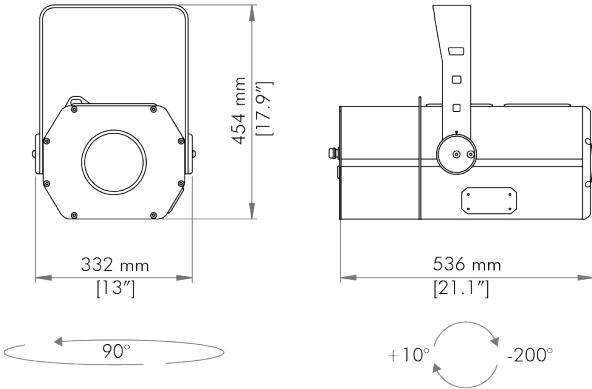


Date	Company		
project			Country
Type			Quantity


Goboled 500
AL5179-B




Description

Packed with multiple effects, patterns and a motorized zoom, GOBOLED 500 offers broad creative design integration for permanent exterior installations. Fitted with one high power LED, this cutting edge image projector delivers a bright and accurate rendition of graphic designs, logos and animations in outdoor and indoor locations.


Features




Black
RAL 9005




IP66



IK07




DMX




RDM



CLASS




CE




MADE IN
ITALY

Optional Features



ANTI-SALINE



EXTERNAL
WIRELESS DATA

SOURCE

Light source	High brightness white light power LEDs
LED configuration	8000K
UV/infrared emissions	None

FEATURES	Dimmer	Linear 0-100% electronic dimming facility
	Strobe	27.7 FPS max
	Resolution (DMX/RDM)	16 bit indexing
OPTICS	Image	7 interchangeable rotating gobos wheel (ø 27/22 mm); 4 fixed gobos plus animation effect wheel 8 colours + white wheel 2 prisms with variable rotation (8 facets and 3D effect) Pulse effect
	Beam Angle (50% max. intensity angle)	Electronic blackout, Motorized focus, 7°-37° motorized zoom
PERFORMANCE	Max. Delivered lumen output	9800 lm (min. zoom) / 13834 lm (max. zoom)
	CRI (Colour Rendering Index)	70 (cold white)
	Colour consistency	2 SDCM
ELECTRICAL	Input voltage	100-240VAC / 50-60 Hz
	Power consumption	2.5A@110-240VAC / 550W (heater on), 1.6A@110-240VAC / 360W (heater off)
	Power factor	cosφ = 0.95 (Heater off), cosφ = 0.97 (Heater on)
	Electrical class	I
	PSU	Integrated
CONTROL	Thermal protection	Integrated thermal protection management
	DMX-RDM	USITT DMX512, RDM, 14 DMX channels. Available in DMX, automatic and Master-Slave mode
	DMX cable	L:1.5 m, as per USITT DMX512-A
PHYSICAL	DMX-RDM Wireless	Optional external wireless system
	Installation	Ceiling mount with adjustable fixing yoke, On poles, Surface mounting
	Fixing Position	90° / +10° -200
	Size	332x536x454mm / 13x21.1x17.9"
	Weight	30 Kg / 66.14 lb
	Housing material	Extruded aluminium body
	Lens material	Optical glass
	Hardware material	Grade A2 stainless steel
	Yoke material	Steel
	Gasket material	Silicone
	Cooling system	Active
	Finish	UV, corrosion and scratch resistant polyester finish
ENVIRONMENTAL	Operating temperature	-30°C to 50°C / (-22°F to 122°F)
	Ingress protection rating	IP66
	Impact resistance rating	IK07
OPTIONS	Anti-saline treatment	Corrosion resistant coating for product installation in coastal environment available on request
WARRANTY	Warranty	2-year warranty
CERTIFICATIONS	EUROPE	Meets CE safety standards, Rohs compliant

ACCESSORIES (ORDER SEPARATELY)**Safety cable**
AL0250**Connection Kit DMX**
"S"
AL8284