

ENTTEC



PROFESSIONAL LED LIGHTING + CONTROL SOLUTIONS

2024 catalogue

Welcome to ENTTEC



Our offices

ENTTEC ASIA-PACIFIC (GLOBAL HQ)

43 Indian Drive
Keysborough, VIC 3173
Australia
+61 3 9763 5755
sales@enttec.com.au
enttec.com.au/support

ENTTEC AMERICAS

600 Park Offices Drive, LL-58
Durham, NC 27709, USA
(888) 454-5922
sales.americas@enttec.com
enttec.com/support

ENTTEC EUROPE

Floor 3, News Building
3 London Bridge Street
London SE1 9SG, UK
+44 (0) 207 061 6210
sales@enttec.co.uk
enttec.co.uk/support

ENTTEC MIDDLE EAST

Al Quoz Industrial Area # 04 /
S03, 26th Street
Plot number 369-0478 /
Warehouse # 03 / PO BOX 643989
Dubai, UAE
+971 (4) 337 4500
sales@enttec.ae
enttec.ae/support

Join us



facebook.com/enttec



youtube.com/enttecofficial



instagram.com/enttecofficial



linkedin.com/company/enttec

What's hot?

Control DMX or LED pixel lighting over Ethernet the easy way.

PAGE
36

SMART LED pixel dots for professional installations.

PAGE
14

State-of-the-art lighting software for musicians.

PAGE
44



PAGE
12

Compact smart controllers for show recording and playback.

Contents

An introduction to ENTTEC	4
The ENTTEC pixel system	6
Show control	10
Pixel lights	14
Pixel software	22
Pixel control	26
Constant voltage lights	32
Constant voltage control	33
Network	34
DMX management	38
Lighting control for musicians	44

Our story.

EUROPE
LONDON, UK

AMERICAS
RALEIGH-DURHAM, USA

MIDDLE EAST
DUBAI, UAE

GLOBAL HQ
(ASIA-PACIFIC)
MELBOURNE, AUSTRALIA

Australians are well-known for their no-nonsense, pioneering spirit. And having confronted the question, "Why can't I control DMX lights from a computer?" this is precisely what Nicolas Moreau channelled in 1999 when he conceived and developed a world first PC-to-light fixture interface: the **Open DMX USB**.

Designed to be high-quality, affordable, and compatible with existing systems, it was a well-engineered yet deceptively simple device. What's more, as the 'Open' part of the name suggests, its schematics were made

freely available for anybody to study and replicate, thus ensuring that this new technology would rapidly spread and herald previously unheard-of creative possibilities that would revolutionise the lighting industry.

The ENTTEC brand grew from both this product and its transparent philosophy, rapidly developing a reputation, not just for engineering expertise, fine craftsmanship and technical innovation (with several products becoming global industry standards), but also for the kind of fast and flexible support and service that lighting professionals demand. We set out to treat our clientele as we'd like to be treated ourselves - with integrity, proficiency and dedication to achieving the best possible outcome.

ENTTEC

Entertainment Technology

1999

Invention of the OPEN DMX USB leads to the founding of ENTTEC.

2010-2013

ENTTEC expands internationally, establishing offices in North Carolina (USA) and London (UK).

2020

SMART PKL dot LED fixtures are manufactured by ENTTEC at our Australian facility to ensure premium quality as well as reducing our carbon footprint.

2023

One of the fastest growing cities in the world, Dubai is chosen to bring ENTTEC's lighting expertise to the Middle East for the first time.

2003

DMX over Ethernet is introduced, enabling longer and faster lighting installations.

2017

ENTTEC LED Mapper (ELM) wins Live Design Lighting Control Software of the Year award.

2022

Factory expansion and smart thinking during the global pandemic results in the ability for all ENTTEC products to be manufactured entirely in-house.

ENTTEC

Dating back to the year 2000, one of ENTTEC's oldest products, the original DMXPlayBack, sits behind its modern day evolution: the intelligently designed S-Play SP1-1.



Our products have played a role in projects for a range of international clientele, including:



As the scope and popularity of our product range increased, so did the need to expand our operations internationally. To accompany our state-of-the-art design and manufacturing facility in Australia, we established ENTTEC Americas in 2010, based in the famous Research Triangle region of North Carolina, USA, as well as ENTTEC Europe in 2013, with an office in London and dealers throughout the continent. We are also proud to have opened our first Middle Eastern office in Dubai in 2023.

Now a major player in the global lighting industry - known for our high-end LED luminaires, pixel system innovations, and true end-to-end solutions for virtually any project - we like to keep our focus firmly on the future through continual research and testing.

Our momentum derives from a genuine hunger to push beyond the boundaries of what's currently possible, and the desire to pass our discoveries on to you.

It is our goal to ensure that our products continue to inspire users throughout the world to produce amazing visuals showcasing the zenith of creative technology.

Of course, we also ensure that our products are compliant with key international regulatory standards, including:



"A well-designed and built lighting system does more than provide illumination.

It provides inspiration."

Nicolas Moreau
ENTTEC founder



We are the pixel experts.

If you're looking for an end-to-end solution to produce a spectacular lighting display that's not only highly customisable, but simple to configure and control, look no further than ENTTEC's famous pixel system.

Thanks to years of meticulous research and development, our pixel technology is designed to give you the power to harness an incredible selection of compatible devices in a multitude of ways, bringing an almost infinite array of creative possibilities on any scale.

Why pixels?

With traditional setups, every LED in a series has to do the same as the others. But with pixel technology, each LED can be controlled independently - opening the door to almost countless possibilities.

The ENTTEC pixel system

Mapping PAGE 22

To map physical LEDs to video content, you'll need LED mapping software. ENTTEC LED Mapper (ELM) was voted 'Best Lighting Control Software of the Year' by a panel of industry experts at the Live Design Awards 2017.

ELM enables you to map vector curves and other tricky shapes, then use its internal effects library or even your own videos or audio to control your LEDs.



The award-winning ENTTEC LED MAPPER (ELM) software now comes bundled with selected PIXEL PRODUCTS, featuring a FREE license that enables you to map and control the equivalent amount of LED pixels that your chosen product is capable of.

Look out for this icon!



The ultimate smart show controller PAGE 10

The S-PLAY is your all-in-one solution for the recording, triggering, and activation of not only light shows but video, non-lighting events, and much more. Create a show with ELM, then store it on S-PLAY to activate precisely when you need it.



For grand scale projects and long distances PAGE 30

The PIXELATOR MINI is a compact Ethernet converter that outputs ENTTEC's PLink protocol - designed for outstanding performance and perfect synchronisation across its eight dual-Universe ports.

For dense pixel arrays

PAGE 26

The OCTO is an 8-universe pixel controller with network linking capable of being powered 5-60v DC (the widest voltage range for a controller in its class). With a fast processor and support for many output protocols with both data and clock, the OCTO is a truly versatile driver.



Add LED pixel strips

PAGE 18

For tighter spaces and stealth installations, our range of classic 5V and 12V **PIXEL STRIPS** are the way to go. Manufactured to the highest standards, with better substrates and thicker copper than other strips on the market, ENTTEC pixel strips are quality checked and tested by our team of engineers in order to ensure optimal compatibility with our range of controllers.



Inject data + power

PAGE 31

Extend your layout up to 300 metres over standard CAT6 cable by using ENTTEC's PLink protocol. Developed especially for pixel projects, simply BYO power supply and inject via a **PLINK INJECTOR** (standard and robust IP66 versions available).

Learn more about our **PIXEL PRODUCTS** where you see this icon.



Add LED pixel dots

PAGE 14

ENTTEC's **SMART PXL dot** series are the professional choice for LED installations.

These flexible lengths of customizable, high-intensity, full-spectrum LED nodes have been designed from the ground upward for a robust installation. Suited for indoor or outdoor usage, they come in default strings of 20 and feature different diffuser options.





Fitout for KFC at Sydney airport international terminal, featuring ENTTEC S-Play, OCTO and 4000+ SMART PXL40 LED dots.



Show control

S-PLAY series show controllers

With intuitive controls to record, edit, schedule and play cues, you don't have to be an experienced lighting designer or systems integrator to conjure up amazing performances using an S-PLAY show controller.

What's more, S-PLAY doesn't just handle light shows: it can trigger non-lighting events too, opening up a new world of possibilities.

With four different models in the series, there's an S-PLAY to suit every situation. Select from the flagship S-PLAY SP1 with its 32U output, the impressive 16U LITE, compact 2U MINI or entry-level 1U NANO.

Whichever you choose, with countless applications from theatrical events to architectural design and smart home integration, automated show technology has never before looked so good, or been this easy to master.

The ultimate
solution for
automated
shows.



S-PLAY SP1

SKU: 70092



- > User-friendly web interface
- > Supports remote access over the internet
- > Trigger external events using a wide range of devices
- > Onboard LCD menu + USB for backing up shows
- > Expandable storage using the SD card slot
- > Connect and sync multiple S-PLAYs for extra control
- > EN-Case modular housing for easy rack, surface or DIN-rail mounting



DATA/POWER IN



DATA OUT



Record spectacular shows to play back on schedule or via interactive triggers ...

Whenever you want.

However you want.

The S-PLAY SP1's robust 1U half-width EN-Case modular hardware allows for a variety of surface, truss, rack and DIN rail mounting options straight out of the box thanks to its innovative design (mounting components included).



RECORD.

Use the web interface or multiple remote triggering options to record up to 32 eDMX universes or 2 universes of physical DMX. The S-PLAY SP1 contains smart features i.e. loop detection to ensure perfectly smooth looping.



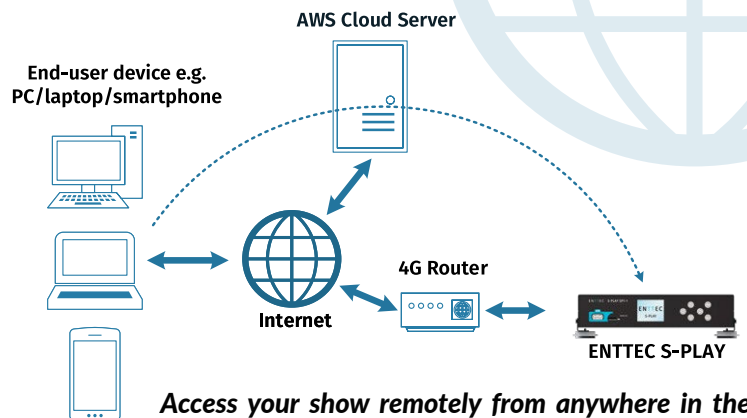
EDIT.

Using the intuitive timeline editor, multiple recordings and scenes can be stitched together while adding triggers and events to allow the S-PLAY SP1 to integrate into the heart of any control system.

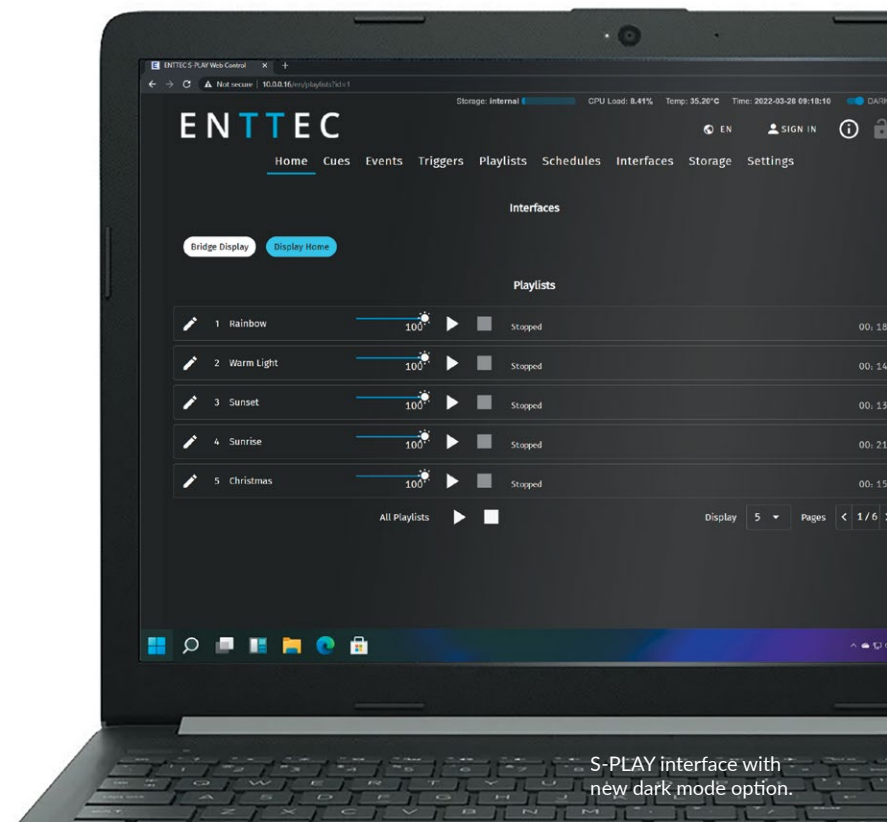


PLAY.

Play back multiple simultaneous shows from the internal scheduler, or when triggered in real time by building automation software (e.g. Control4), iPad Apps, pressure pads, motion detectors, push buttons and much more!



Access your show remotely from anywhere in the world via the internet using the S-PLAY SP1-1's secure SSH connection!



S-PLAY interface with new dark mode option.

Show control

S-PLAY LITE/MINI/NANO

SKU: 70094 / 70093 / 70095

S-PLAY SP1-1

SKU: 70092

S-PLAY LITE

SKU: 70094

ENTTEC



Explore the S-PLAY series on our website.

Talk to the ENTTEC team today and discover how integrating our S-PLAY show controllers can take your smart home setup to a whole new level.



S-PLAY MINI

SKU: 70093



S-PLAY NANO

SKU: 70095

0 cm 1 2 3 4 5 6 7 8

NOTE: the show controllers on this page are shown at real-life scale.

ENTTEC

Compare the S-PLAY series

	S-PLAY SP1 70092	S-PLAY LITE 70094	S-PLAY MINI 70093	S-PLAY NANO 70095
USITT DMX512-A playback	2U (1024 channels)	2U (1024 channels)	1U (512 channels)	1U (512 channels)
Art-Net/sACN universe playback	32U (16,384 channels)	16U (8,192 channels)	2U (1024 channels)	N/A
Max refresh rate (FPS)	Art-Net & sACN: 60 USITT DMX512-A: 44	Art-Net & sACN: 60 USITT DMX512-A: 44	40	40
Max playlist count	200	100	8	4
Max cue track per playlist	4	4	2	1
Max Cues	200	100	16	4
Max Triggers	200	150	16	8
Max Events	200	150	16	4
Max custom interface	10	5	1	N/A
OSC API	✓	✓	✓	✓
HTTP API	✓	✓	✗	✗
Scheduler	✓	✓	✗	✗
Remote access	✓	✗	✗	✗
Multi-sync	✓	✗	✗	✗
LED indicators	✗	✓	✓	✓
LCD + buttons	✓	✗	✗	✗
RS232 port	✓	✓	✗	✗
External/expandable storage	✓ - USB and SD card	✓ - SD card	✗	✗
Internal show storage capacity	8GB (~10 hours of 32U at 44fps)	8GB (~10 hours of 32U at 44fps)	1GB	1GB
Power input	DC jack (12V PSU & plugs included)	DC jack (12V PSU & plugs included)	2-pin Phoenix screw terminal	2-pin Phoenix screw terminal
Ethernet port / PoE	RJ45 / PoE IEEE 802.3af	RJ45 / PoE IEEE 802.3af	RJ45	RJ45
DMX port	2 x 5-pin XLR (female)	2 x 5-pin XLR (female)	Bi-directional 1 x 3-pin Phoenix screw terminal	Bi-directional 1 x 3-pin Phoenix screw terminal
Digital input	4 digital inputs + 1 GND + 1 5V (6-pin screw terminal)	4 digital inputs + 1 GND + 1 5V (6-pin screw terminal)	4 digital inputs + 1 GND (5-pin Phoenix screw terminal)	4 digital inputs + 1 GND (5-pin Phoenix screw terminal)
Relay	2 x relay 6-pin screw terminal (max limits, 50V DC or 60W)	2 x relay 6-pin screw terminal (max limits, 50V DC or 60W)	1 x relay (3-pin screw terminal)	1 x relay (3-pin screw terminal)



SMART PXL LED DOTS

PXL 100x25: 73030 / PXL-60: 73050 / PXL-40P: 73040 /
PXL40 METAL: SKU: 73010-73012



16-BIT



Robust and reliable, ENTTEC's 16-bit resolution, individually-addressable SMART PXL dot series are designed to withstand the harshest environments.

With many customisable features, SMART PXL dots can be configured into any conceivable shape. Engineered to create spectacular, crisp lighting effects, they add a stylish design element to any architectural, commercial or entertainment project

Why SMART PXL dots?

- > Flexible, long-lasting and robust
- > Highly customisable
- > Smooth 16-bit dimming resolution
- > IP67 rating for outdoor use
- > Improved thermal management compared to pixel tape
- > Visual appeal as a conspicuous feature

Google Pixel Wall

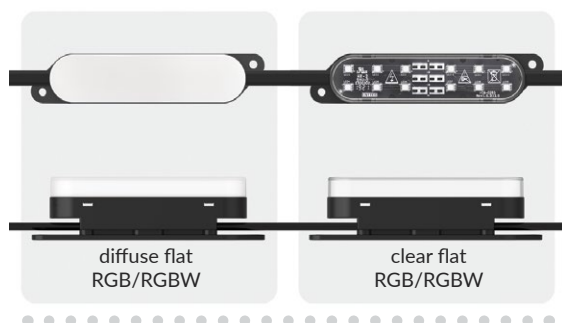
Interactive customer experience for Google's flagship retail stores, designed and installed by Grumpy Sailor using ENTTEC pixel dots.



Lens options + light output

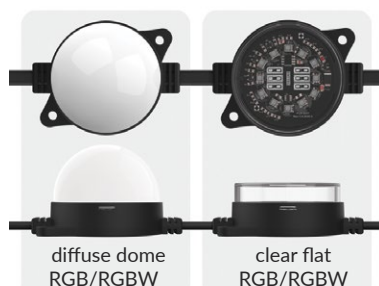
SMART PXL 100x25

Max lumens - 24V: 39.2 RGB / 87.1 RGBW
Max lumens - 48V: 38.3 RGB / 82.5 RGBW



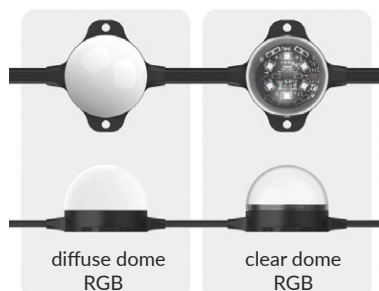
SMART PXL-60

Max lumens - 24V: 65.0 RGB / 110.4 RGBW
Max lumens - 48V: 63.5 RGB / 101.4 RGBW



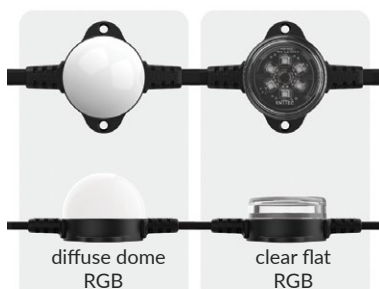
SMART PXL-40P

Max lumens - 24V: 29.1 RGB



SMART PXL40 METAL

Max lumens - 24V: 19.3 RGB



HI-RES.

16-bit native for an ultra-smooth dimming curve and mixing detail that will truly wow your audience – and with an ENTTEC control system, you can also run them in 8-bit mode to double your control channels.



BRIGHT.

Each SMART PXL node contains premium LEDs, giving an impressive lumen output with different lens options, while thick, tinned copper cabling reduces voltage drop over the length of each string.



ROBUST.

SMART PXL dot cases are made from a selection of the finest and most durable quality materials available. With a 3-year warranty as standard, these dots are seriously engineered to stand the test of time.



SECURE.

Offering outstanding protection against moisture and corrosion, SMART PXL internal components are fully-potted (encased in resin) for waterproofing as well as resistance to shock and vibration.



SMART PXL-40P dots

- Flexible strings of 41.5mm LED nodes
- RGB LEDs • 24V system
- injection-moulded PVC case

- For professional applications
- Colour-changing LED pixels
- Rich hues & ultra-smooth dimming
- Custom lengths made to order

SMART PXL 100x25 dots

- Flexible strings of 100mm x 25mm nodes
- RGB or RGBW LEDs • 24V or 48V system
- injection-moulded PVC case

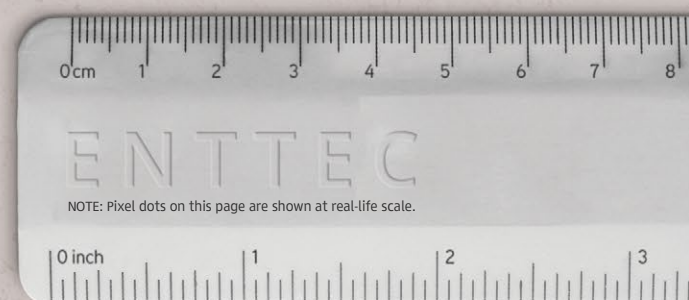
SMART PXL-60 dots

- Flexible strings of 55.5mm LED nodes
- RGB or RGBW LEDs • 24V or 48V system
- injection-moulded PVC case

SMART PXL40 METAL dots

- Flexible strings of 41.5mm LED nodes
- RGB LEDs • 24V system
- Marine-grade anodised aluminium case

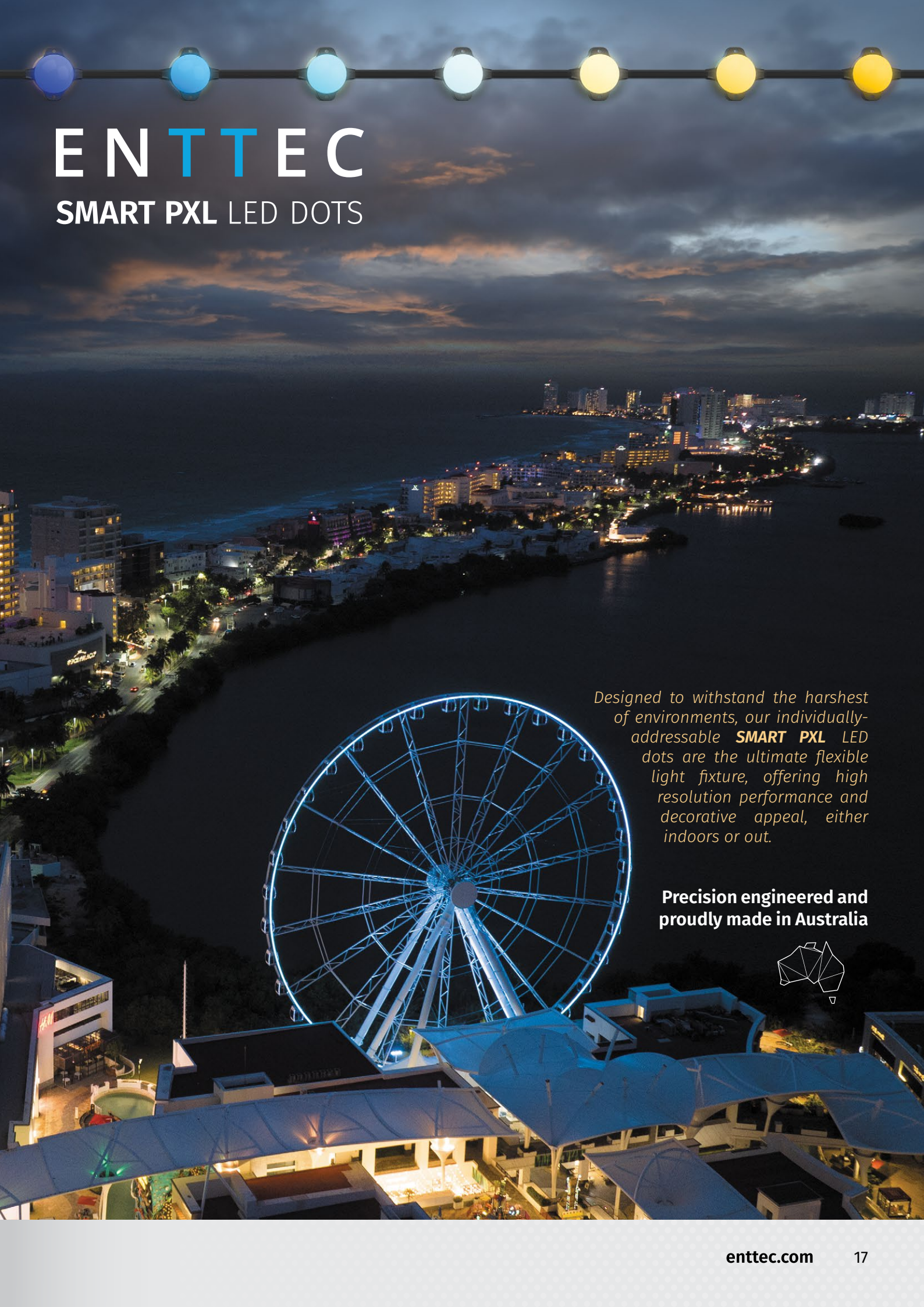
Talk to one of our friendly project consultants today and learn how integrating ENTTEC SMART PXL dots can take your setup to a whole new level.





ENTTEC

SMART PXL LED DOTS



*Designed to withstand the harshest of environments, our individually-addressable **SMART PXL** LED dots are the ultimate flexible light fixture, offering high resolution performance and decorative appeal, either indoors or out.*

**Precision engineered and
proudly made in Australia**





SMART PXL LED STRIPS

SKU: SEE TABLE



Manufactured to the highest standards, our digital pixel strips are designed, quality checked and tested by our team of in-house engineers. Available in different voltages, mapping orders and PCB colours, there's a strip for virtually every situation.

- > 32-bit, True Colour display
- > Scan frequency of 400Hz+/s
- > Custom PCB design to minimise the effects of voltage drop
- > Adhesive backing for quick and easy installation
- > Operating temperature 5°-50°c

We use thicker copper (2-3oz/sqft) and better quality substrates than other strips on the market, meaning:

- > Extra durability
- > Safer (better heat dissipation)
- > Improved current flow
- > Less voltage drop (which means less power re-injection required)

SKU	PRODUCT NAME	MAPPING ORDER	PCB COLOUR	VOLTAGE	LEDs / m
8PXW60-F-12-B	Black pixel strip RGBW (12V) – 5m	GRBW	Black	12V	60
8PXW60-4-B	Black pixel strip RGBW 60 (5V) 4m	GRBW	Black	5V	60
8PX60-4	Pixel strip RGBW: 8PX60 (5V) 4m	GRBW	White	5V	60
8PX30-F	Pixel strip RGBW: 8PX30 (5V) 5m	GRBW	White	5V	30
8PX60-12-W2	Single pixel LED strip (12V) 5m	RGB	White	12V	60
8PX60-12-B2	Black single pixel LED strip (12V) 5m	RGB	Black	12V	60
8PL60-F-12	Pixel tape RGB: 8PL60 (12V) 5m	RGB	White	12V	60
8P60-5-B	Black pixel tape RGB 8P60 (5V) 5m	GRB	Black	5V	60
8PL60-F	Pixel tape RGB: 8PL60 (5V) 5m	GRB	White	5V	60
8PL30-F	Pixel tape RGB: 8PL30 (5V) 5m	GRB	White	5V	30

8PX60-12 SERIES: the very latest in LED technology

New advances in design and manufacturing have given us the most sophisticated 12V strip yet, featuring 60 individually-controllable, SINGLE-PIXEL RGB LEDs per metre.

Available with PCB in classic white or stealth black, each LED has its own inbuilt IC, meaning more space has been dedicated to carrying power to further reduce the impact of voltage drop. This, in combination with its 12V input, means lengths of up to 7m can be achieved without the need to re-inject power - a huge benefit for installers.

An engineering marvel: compact yet powerful 8PX60-12 strips shown at their at real-life scale (PCB width: 10mm)

A stunning light sculpture and its beautiful reflection on the tranquil waters of Skovsøen lake in Odense, Denmark ~ Conceived and created by Chaos Engine using 5,400 LED pixels.

RGBW PIXEL STRIPS

8PXW60-F-12-B



8PXW60-4-B



8PX60-4



8PX30-F



RGB PIXEL STRIPS

8PX60-12-W2



8PX60-12-B2



8PL60-F-12



8P60-5-B



8PL60-F



8PL30-F





NEON FLEX

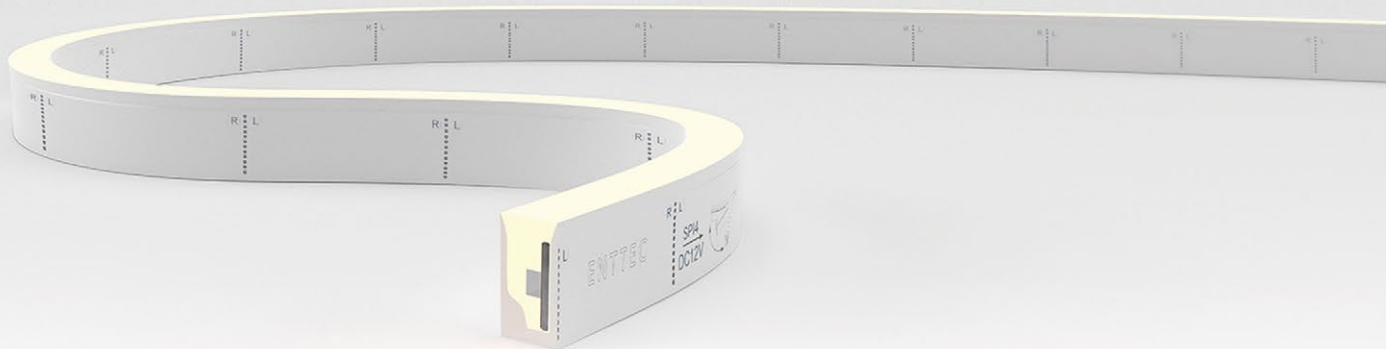
SKU: 73060



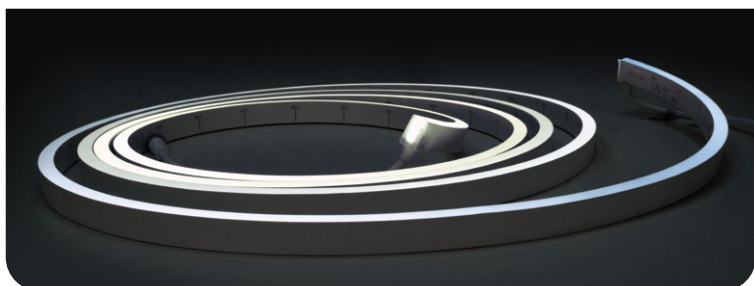
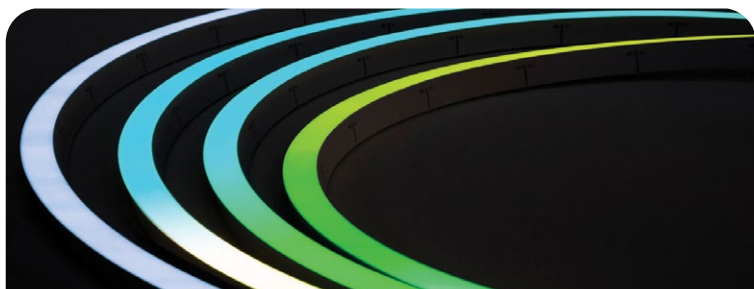
The ultimate LED lighting solution that combines flexibility, durability, and ease of installation. Made from high quality silicone, this waterproof LED strip is designed to handle any environment.

With its ability to bend horizontally, ENTTEC Neon Flex allows for easy shaping and contouring, enabling you to create amazing, unique designs.

Installing Neon Flex is a breeze with our range of cable and power connector options. In addition, with accessories for surface or recessed mounting, Neon Flex ensures a sleek and professional finish.

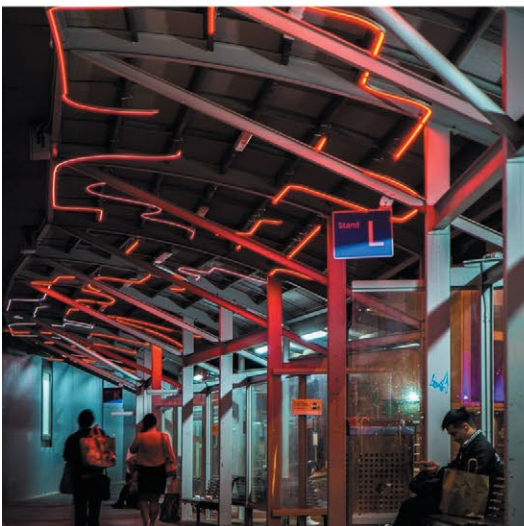


- > For professional applications
- > Made from high quality silicone
- > Can be bent horizontally
- > 24V DMX or 12V SPI versions available
- > Colour-changing LED pixels
- > Rich hues & ultra-smooth dimming
- > Custom lengths made to order



DATA/POWER IN







Purchase an ENTTEC pixel controller to receive a **FREE ELM license!**

*see website for details



ELM @ Ipswich City Council tower, Queensland, Australia

LIVEDESIGN
LIGHTING
CONTROL SOFTWARE
PRODUCT
2016-2017 OF THE YEAR



ENTTEC LED MAPPER (ELM)

SKU: 70581 (Licences: ENTRY: 4U / STANDARD: 16U / ADVANCED: 48U / PROFESSIONAL: 96U / SUPER: 256U / ULTIMATE: 512U / ARCHITECTURAL: 1024U / ELITE: 2048U)



PIXEL PRODUCT

Let your creativity soar with the versatility, power and precision of ENTTEC's award-winning, content-based LED mapping software.

- > Highly-intuitive interface
- > Huge generative effects library
- > Audio reactive mix feature
- > 2D & 3D mapping
- > Control up to 2048 Universes
- > Upgrade your license at any time
- > Proven track record of high-profile projects

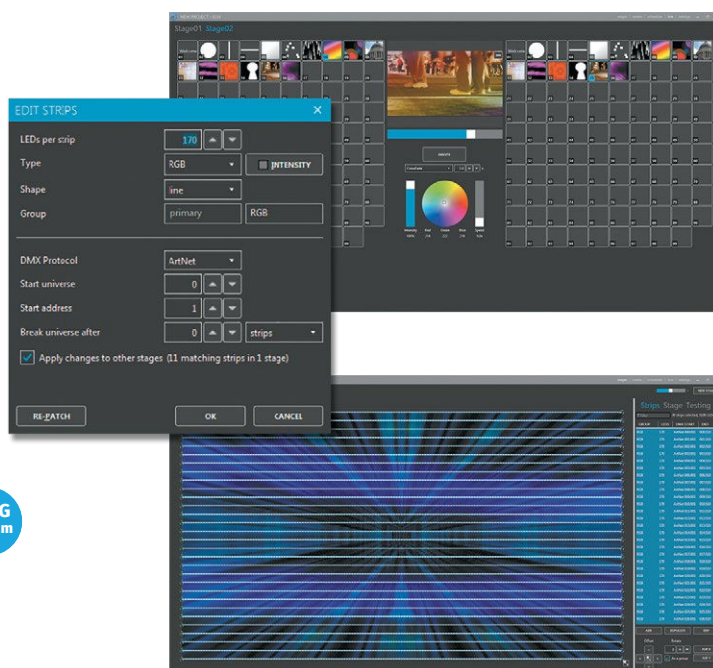
DATA IN



DATA OUT



PLATFORM

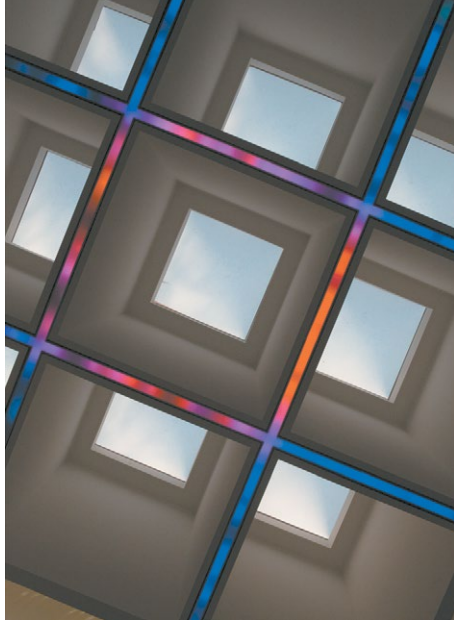


*using DMX USB Pro

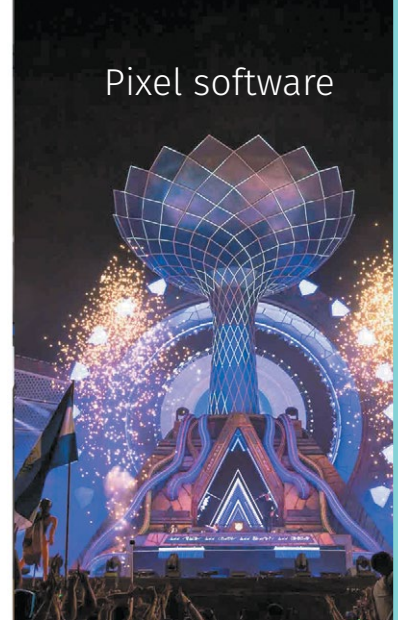
RECOMMENDED SYSTEM REQUIREMENTS: Windows 7+, dual core 2 GHz CPU, 2 GB RAM - NVIDIA GeForce 600 series or Intel HD Graphics 5500, released after 2013 with OpenGL 3.3 support.

ELM combines raster-based media with vector-based, scalable and repositionable objects to represent your LED strips. Choose whether your LEDs are in a line, curve or full loop with just a few mouse clicks - then stretch, resize or move them around on-screen to match your strips in the real world.

Load and play back 4K or higher video files, generative effects, still images or display live streams using NDI, Spout, MPEG streams or physical capture cards. Create sequences and steps (cues) and easily trigger them remotely via DMX, OSC and HTTP. You can also schedule your sequences, which allows for the syncing of multiple stages - perfect for projects with many layers, such as a 3D structure.



ELM @ The Glenwood, Raleigh, NC



ELM @ Electric Daisy Carnival, Las Vegas

"After reviewing a huge amount of options we found ELM to be the most intuitive and reliable application for the needs. It's clearly been designed by a team of people with a deep understanding of how a piece of software like this is actually used in the field. For a 6-week run, every night of the week during the British winter, it was rock solid."

Chris Evans-Roberts
Founder & Creative Director, ITHACA



ELM @ Kew Gardens, London, UK ~ by ITHACA

With output support for Art-Net, sACN and KiNet, ELM works with a large number of ENTTEC and 3rd party lighting products. You can easily integrate ELM with your favourite control software using DMX, Art-Net, sACN, ENTTEC's DMX USB Pro, OSC or HTTP. ELM supports a wide range of LEDs such as RGB, BRG, RGBW, RGBWA and white in either 8- or 16-bit profiles.

Optional support

ELM software runs on PC/Windows systems **ONLY**, but it can be controlled remotely by iOS devices using 3rd party software with the remote API's already integrated as standard.

Touch OSC by Hexler can allow recalling of states, or for a more complete implementation, ON LX's Ctrl for iPad allows ELM to be controlled as part of a wider installation with live thumbnails, creating a perfect customisable front-end interface for any installation requiring efficient editing on the run.





**LED
DOTS**

+

S-PLAY

smart light show controller



The perfect pixel pair.

Engineered to perfection by ENTTEC



SEE
PAGE
10

SEE
PAGE
14

AUSTRALIAN
DESIGNED + MADE

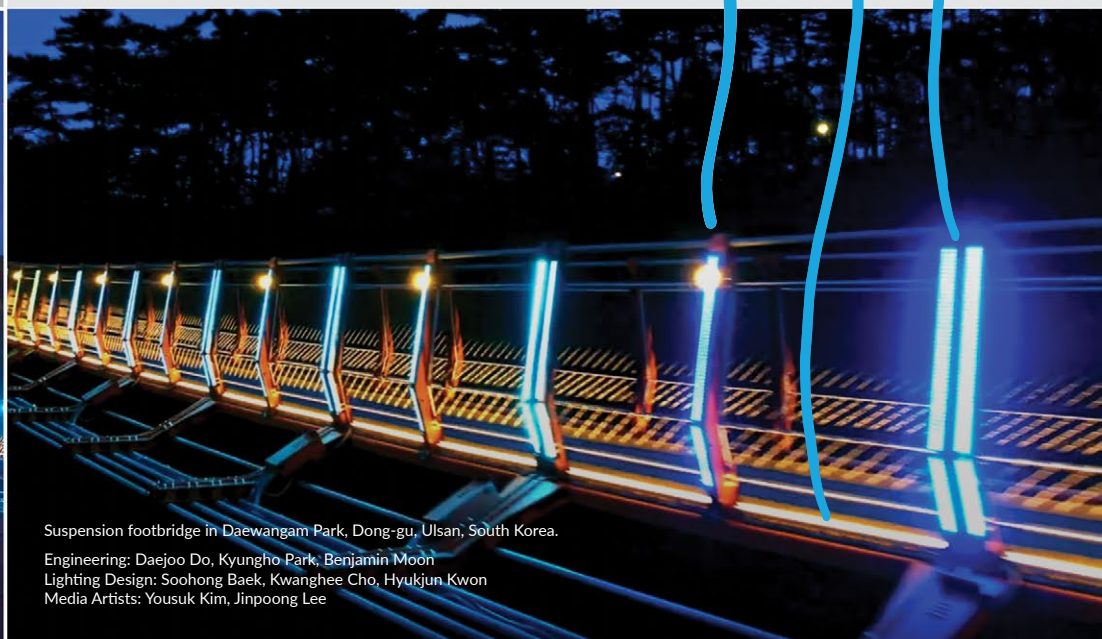
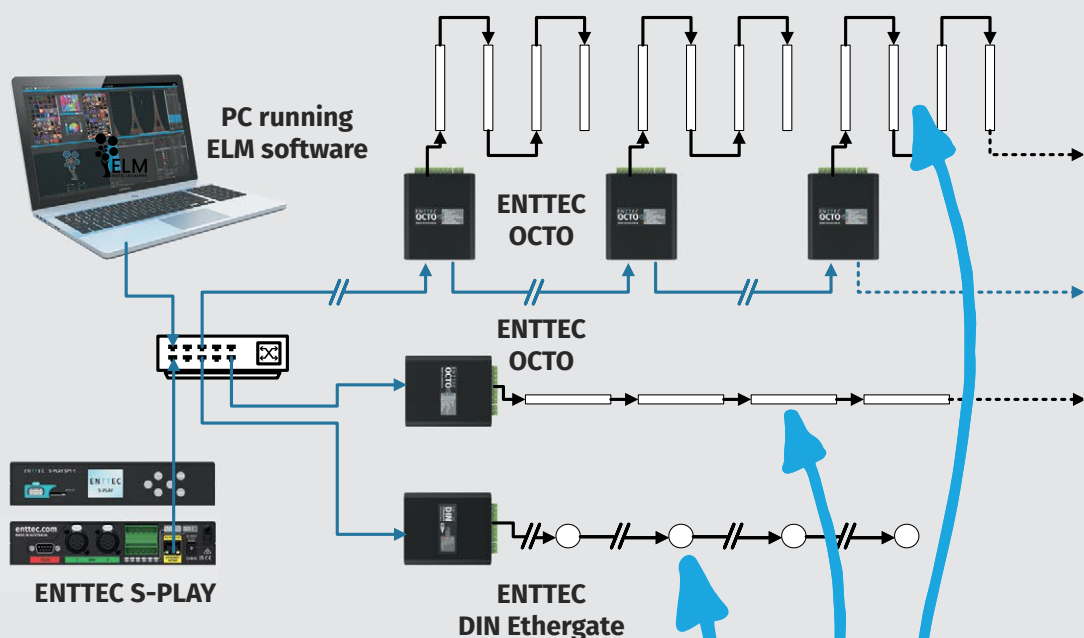


OCTO @ WORK

This is one of the longest suspension footbridges ever constructed and you'll find it spanning a bayside inlet in the coastal city of Ulsan, South Korea.

The LED pixel installation has been mapped using ENTTEC LED Mapper (ELM), controlled by an S-PLAY and fed into a series of OCTOs and DIN Ethergates.

This spectacular light show can be seen at night from the opposite side of the bay.



Suspension footbridge in Daewangam Park, Dong-gu, Ulsan, South Korea.

Engineering: Daejoo Do, Kyungho Park, Benjamin Moon
Lighting Design: Soohong Baek, Kwanghee Cho, Hyukjun Kwon
Media Artists: Yousuk Kim, Jinpoong Lee



OCTO

SKU: 71521



The latest evolution of our 8-Universe, dual-output eDMX to LED pixel data converter, the OCTO is a robust and reliable installation-grade device that connects directly to your pixels, engineered to take any architectural, commercial or entertainment project to the next level.



Designed for ultra-fast deployment of LED strips and pixel dot systems, the OCTO is compatible with a wide range of input and output protocols - and you can even create your own custom output protocols.

- > Capable of network chaining
- > Huge list of supported SPI protocols or create your own protocols
- > Variable voltage input range of 5-60V
- > TS35 DIN rail or surface mount options
- > 'Identify' button + LED for easy testing



DATA/POWER IN



DATA OUT



Pixel controllers



DIN PIXIE

SKU: 73539



A smart, cost-effective lighting control solution, the DIN PIXIE is a compact, 2-Universal DMX to LED pixel protocol converter and standalone player, engineered to take any architectural, commercial or entertainment project to the next level.



- > 5-48V DC input range
- > Control up to 340 RGB or 256 RGBW pixels per output
- > Supports a wide range of strips/dots
- > Pre-program or run live
- > 2 x DMX ports (in only, not daisy chain)
- > USB control API for custom applications

DATA/POWER IN



DATA OUT



A series of DIN PIXIE drivers are integral to operation of the enigmatic centrepiece installation for *Decoded: 75 Years of the Australian Signals Directorate* @ National Museum of Australia, Canberra.

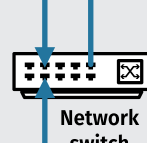


Lighting design & images by Adam Meredith @ MEGS lighting.

PC/laptop running ENTTEC ELM software



ENTTEC DIN PIXIES



Network switch



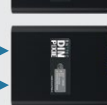
ENTTEC STORM



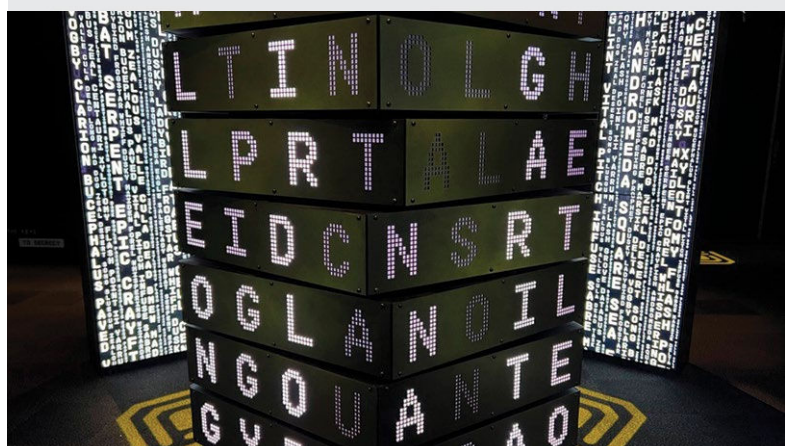
8PXW60-F-12
PIXEL STRIP

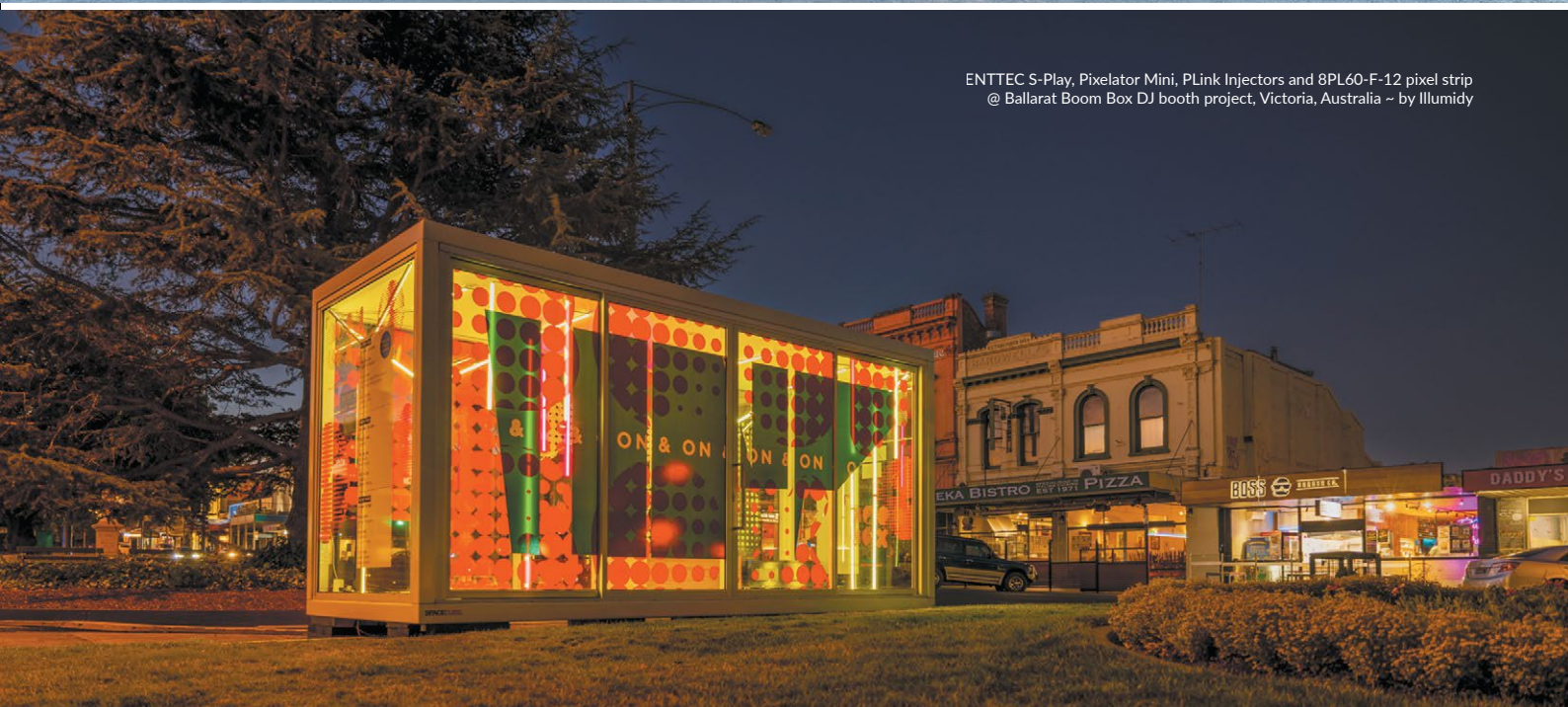


ENTTEC S-PLAY



ENTTEC DIN PIXIES







PIXELATOR MINI

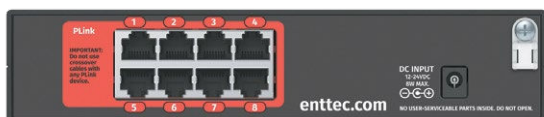
SKU: 70067



An installation-grade Ethernet pixel converter designed to make control of LED pixel dots and strip simple. Using Overdrive mode, the Pixelator Mini is capable of outputting a total of 32 Universes (up to 4 Universes per port), with perfect synchronisation across each.



The Pixelator Mini takes domestic and commercial smart lighting installations to a whole new level.



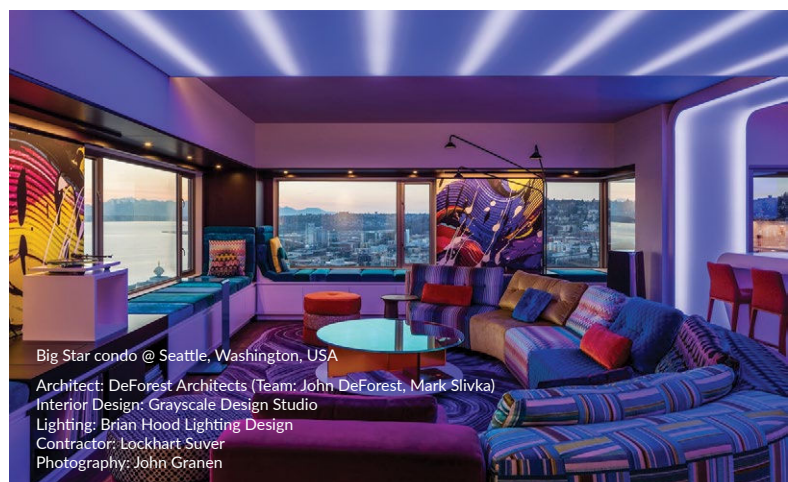
Convenient and easy to use, PLink outputs using RJ45 connectors (ANSI 1.27) are universally familiar to installers and require no soldering.

- > Ethernet connection (10/100 Mbps)
- > Compatible with many pixel protocols
- > 8 x 4-Universe PLink ports
- > Output protocol customisation
- > Intuitive configuration via web browser
- > EN-Case modular housing for easy rack, surface or DIN-rail mounting

DATA/POWER IN



DATA OUT



Big Star condo @ Seattle, Washington, USA

Architect: DeForest Architects (Team: John DeForest, Mark Slivka)
Interior Design: Grayscale Design Studio
Lighting: Brian Hood Lighting Design
Contractor: Lockhart Sover
Photography: John Granen



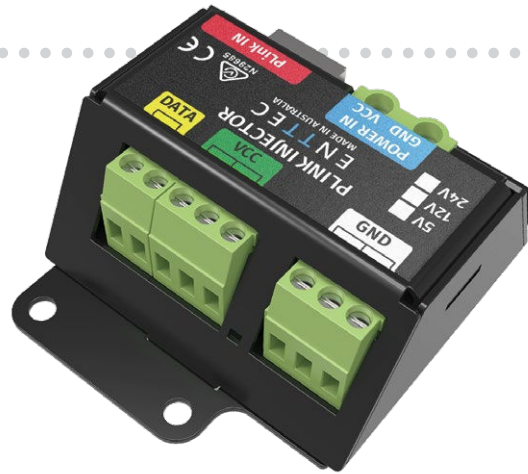
PLINK INJECTOR

SKU: 73544 (12V-24V) / 73546 (5V)



The smartest way to connect and extend your pixel set-up, PLink injectors can be positioned as far as 300 metres from your Pixelator.

- > Works with the Pixelator series to extend pixel data over long distances
- > No configuration needed
- > Available in 5V & 12V-24V options
- > Requires external DC power supply
- > 10A maximum throughput



DATA/POWER IN

PLink
2U

5/12-24
V

DATA/VOLTAGE OUT

Wide range of
Pixel protocols

5/12-24
V

SEE
PAGES
6-7

Learn how you can use the PLink system in conjunction with the Pixelator series for efficient control of LED pixel lighting.



WATERPROOF PLINK INJECTOR

SKU: 73924 (IP66 PLINK INJECTOR)



With this waterproof pixel data injector, you can take your pixel strips outdoors and drive them like a pro in practically any conditions.

- > 'Outdoor' version of 73544/73546
- > Works with the Pixelator series to extend PLink data over long distances
- > Controls up to 2U of pixel strip
- > Impact, corrosion and UV-resistant
- > Rated IP66



DATA/POWER IN

PLink
2U

5/12-24
V

DATA/VOLTAGE OUT

Wide range of
Pixel protocols

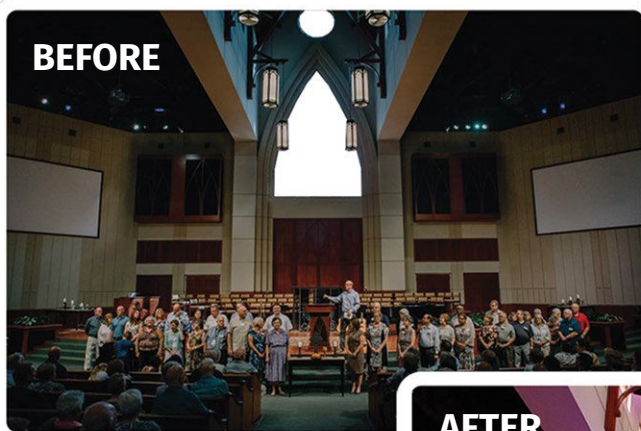
5/12-24
V



CONSTANT VOLTAGE (CV) STRIPS

SKU: 9VL4 / 9VLW

Manufactured to suit any desired mood or effect, our CV strips are available in 10m reels of either RGB or RGBW varieties. CV strips are great for uniform designs or injecting some creative flair into any project.



BEFORE

This spectacular transformation of Florida's Seven Rivers Church was undertaken by the team at Summit Integrated.

ENTTEC CV LED tape strips were used to create accents and wall washes that completely change the atmosphere of the space, lifting it to ethereal heights.



AFTER

- > 24V DC power
- > Easy to control
- > IP20 indoor use only
- > Compatible with the ENTTEC CVC4
- > Engineered and checked by our in-house team

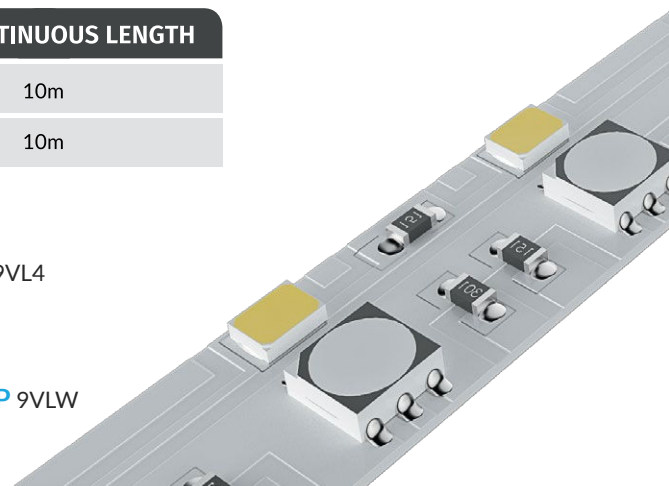
SERIES	PRODUCT CODE	COLOUR	DC POWER	MAX CONTINUOUS LENGTH
9VL	9VL4	RGB	24V	10m
	9VLW	RGBW	24V	10m



RGB STRIP 9VL4



RGBW STRIP 9VLW



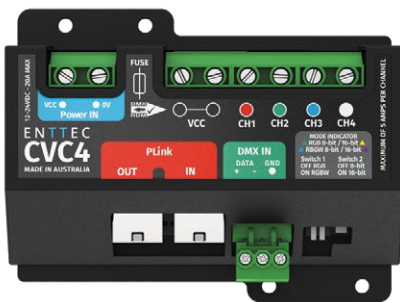


CVC4

SKU: 73926



The CVC4 is an installation-grade constant voltage LED dimmer capable of dimming 4 x 5Amp outputs with up to 16-bit resolution (Choose from (RGB 8-Bit, RGBW 8-Bit, RGB 16-Bit or RGBW 16-Bit). It can be addressed using RDM or ENTTEC's PLink protocol for quick, hassle-free commissioning. Requires an external DC power supply.



- > DMX/PLink input + RDM-addressable
- > Auto-addressable through ENTTEC's PLink system for simple commissioning
- > 5A per channel
- > User serviceable 20A fuse
- > 4 operating modes using DIP switches
- > Converts PLink data from your Pixelator
- > Flicker-free 1KHz dimming

DATA/POWER IN

PLink 12-24v (20A)

DATA/VOLTAGE OUT

CV control tape 12-24 V

ENTTEC LED MAPPER (ELM) SOFTWARE



ENTTEC S-PLAY



ENTTEC CVC4



ENTTEC CVC4



ENTTEC PIXELATOR MINI



ENTTEC PIXELATOR MINI

CVC4 @ WORK

200 x CVC4s driving RGBW LED bars to light up Hobart's Tasman Bridge. Lighting design by Decolux, working closely with Industrial Fire & Electrical (IF&E) & Hobart City Council.



D-SPLIT

SKU: 70578 (2 x 3-PIN + 2 x 5-PIN) / 70579 (4 x 5-PIN)

An optically-isolated DMX splitter and repeater for DMX512, the D-SPLIT gives you the ultimate flexibility to link up to 32 fixtures.

- > 2 x 5-pin/2 x 3-pin or 4 x 5-pin options
- > Each output can support a DMX chain of up to 32 fixtures
- > Compatible with any DMX controller
- > Run four different optically-isolated DMX branches
- > Protects against 1000V of stray voltage

DATA IN



DATA OUT



70578 (2 x 3-PIN + 2 x 5-PIN)



70579 (4 x 5-PIN)



DIN RDS4

SKU: 72004

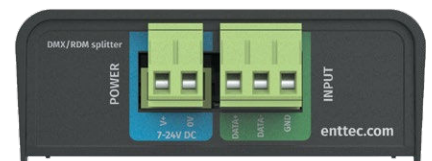
The latest revision to our 4-port DIN-rail DMX/RDM splitter: a high quality, installation grade device in a slimmer, more compact enclosure.

- > 1 DMX/RDM input + 4 DMX/RDM outputs
- > DMX512-A & ANSI E1.20 RDM support
- > Electrically-insulated case material
- > Surface or TS35 DIN rail mount
- > No configuration required
- > 1500V Opto-isolation between each DMX port

DATA IN



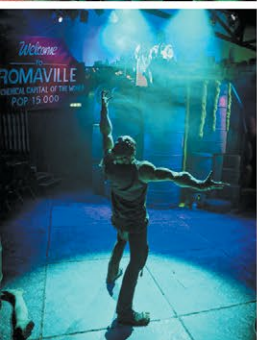
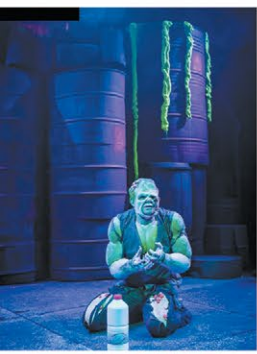
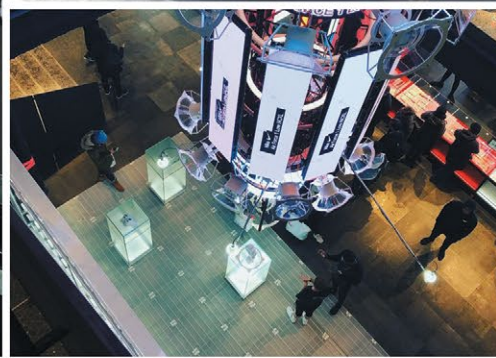
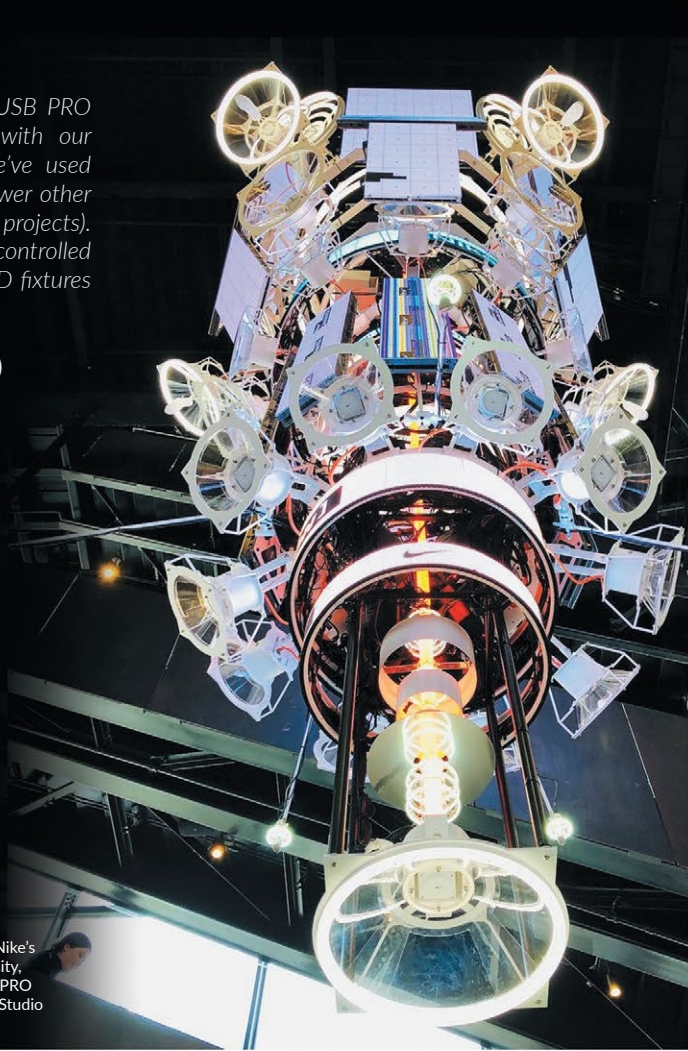
DATA OUT



"We used the ENTTEC DMX USB PRO because of its compatibility with our main installation software. We've used this great little black box to power other Nike projects (and personal art projects). On this particular project, we controlled around 30 different custom LED fixtures with a bunch of them."

Justin Gitlin (aka Cacheflowe)
Multimedia artist & software developer

3-storey tall multimedia sculpture for Nike's latest flagship retail hub in New York City, featuring multiple ENTTEC DMX USB PRO devices ~ by Cacheflowe / Hovercraft Studio



Pixelators / PLinks / ENTTEC pixel strips @ Toxic Avenger musical, London's West End ~ by White Light Ltd

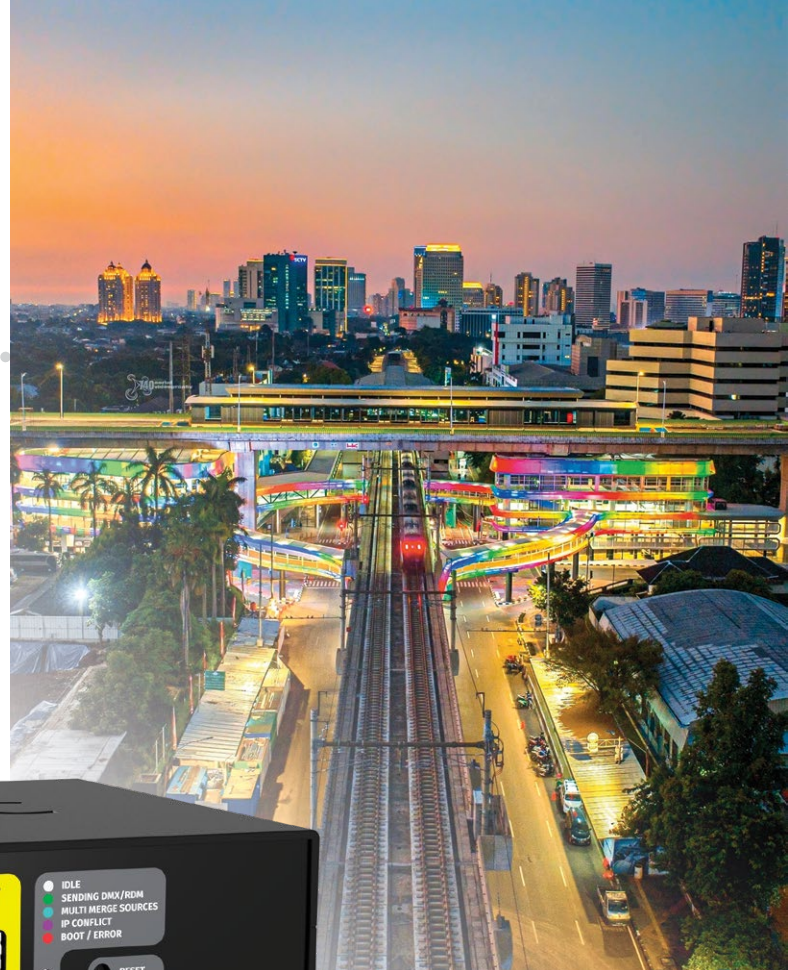


STORM10

SKU: 70056

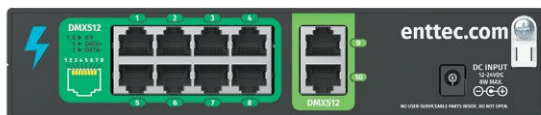


A compact and powerful 10-port, multi-protocol Ethernet to DMX converter, the Storm10 has been engineered for the smooth distribution of DMX universes. And with a little bit of creative thinking, it can even control far more than just lighting fixtures!



A series of ENTTEC STORMs played an integral role in conjunction with ENTTEC LED Mapper (ELM) and two ENTTEC S-PLAYs in the creation of this stunning circular LED skybridge installation at CSW-ASEAN TOD, Kebayoran Baru, South Jakarta, Indonesia. Has public transport ever looked as enticing as this before?

Project credit: PT Panasonic Gobel Eco Solutions Sales Indonesia, with lighting design and supply by PT Scienter Teknologi Indonesia.



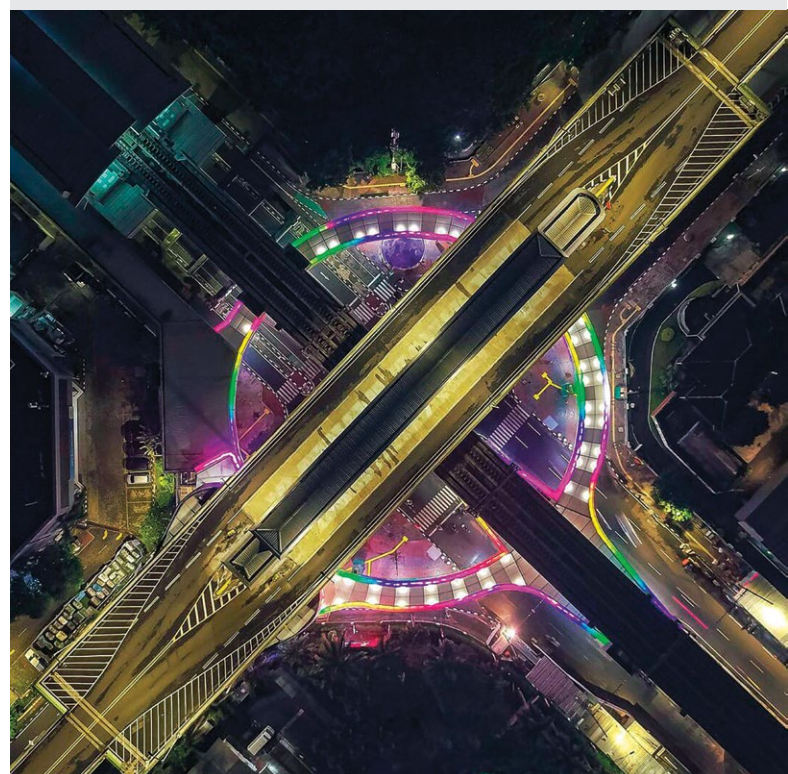
Convenient and easy to use, DMX outputs using RJ45 connectors (ANSI 1.27) are universally familiar to installers and require no soldering.

- > Multi-protocol support
- > Control up to 10 DMX universes
- > Easily configured via web browser
- > PoE or 12-24vDC power input options
- > RDM capability
- > EN-Case modular housing for easy rack, surface or DIN-rail mounting

DATA IN



DATA OUT





DIN ETHERGATE

SKU: 71030

The DIN Ethergate is ENTTEC's next evolution of the DIN ODE/POE units. Providing maximum value for money, the DIN Ethergate has two universes of bi-directional eDMX – DMX/RDM in a compact 4-module DIN-rail form factor.



The mechanical design has been simplified to provide a slimmer, more compact form while maintaining the performance that users have come to expect over the years.

- > Two bi-directional DMX/ E1.20 RDM ports
- > Support for Art-Net 4, sACN and ESP
- > HTP/LTP merging for up to 2 DMX sources
- > Surface or TS35 DIN rail mount
- > IEEE 802.3af PoE or DC 12-24v input
- > Intuitive configuration & web updates

DATA/POWER IN



DATA OUT





ODE MK3

SKU: 70407

With 2 Universes of bi-directional Ethernet/DMX conversion and Art-RDM support, the ODE MK3 is the perfect all-rounder.

- > Two bi-directional DMX ports with optional RDM (E1.20) support
- > 10/100 Mbps Ethernet port with Power over Ethernet or DC 12-24V input
- > Support for Art-Net 4, sACN and ESP
- > Easy to use web-based interface
- > Configurable DMX output refresh rate

DATA/POWER IN



DATA OUT



IMMERSIVE ART

German entrepreneur Lars Hinrichs gives a press conference to announce the launch of Europe's first Digital Art Museum, set to open in Hamburg in 2024.

Lighting designer Maximilian Dickhaus used ENTTEC LED Mapper (ELM) to control these LED pixel bars during the livestreamed presentation.

Discover what ELM can do for your projects on p.22 of this booklet.

"We have been using ENTTEC products for years and were looking for a solution that enabled us to address over 30,000 LEDs via Art-Net. The ENTTEC Storm was a perfect match in terms of performance and usability."

Stefan Kainbacher
Designer @ Neon Golden

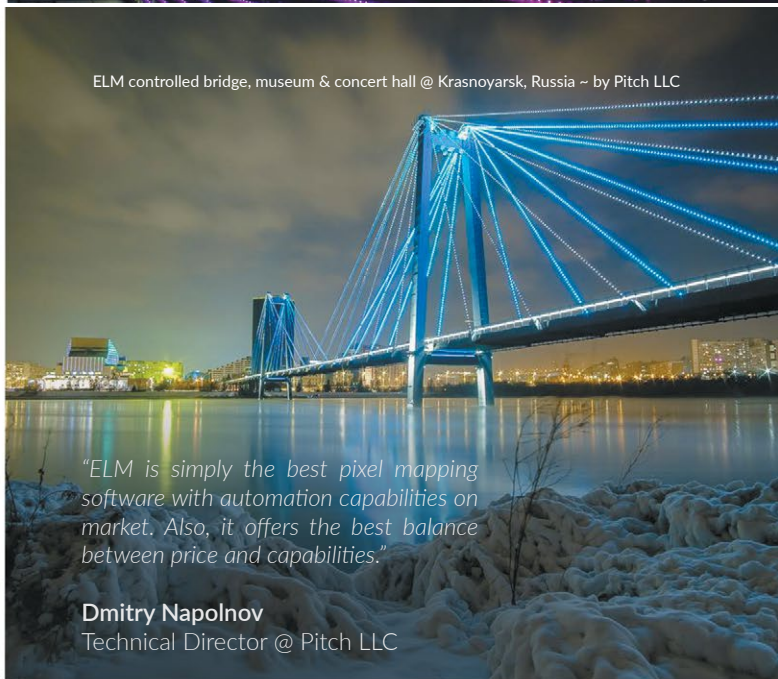


ENTTEC Storm @ Magenta Telekom T-Center, Vienna, Austria ~ by Stefan Kainbacher



Pixelators / PLink system @ The Royal Opera House, Copenhagen, Denmark ~ by Stig Debois

ELM controlled bridge, museum & concert hall @ Krasnoyarsk, Russia ~ by Pitch LLC



"ELM is simply the best pixel mapping software with automation capabilities on market. Also, it offers the best balance between price and capabilities."

Dmitry Napolnov
Technical Director @ Pitch LLC



ELM & ENTTEC LED pixel strips @ Baroq House, Melbourne ~ by James Ady & Luke Stretton



ELM, Pixelator Mini, PLinks and LED strips @ Brisbane Powerhouse ~ by Nathan Street



OPEN DMX USB

SKU: 70303

Compatible with a wide range of applications, get into the world of DMX control from your computer with this affordable interface.

- > Compact size
- > Standard 5-pin DMX port
- > Outputs up to 512 DMX channels
- > Powered by your computer's USB
- > Compatible with popular apps
- > Integrate into your own software using the openly available API to output DMX

DATA IN

USB

DATA OUT

DMX



DMX USB PRO

SKU: 70304

Lightweight, portable and truly professional, the DMX USB PRO is the industry standard to control lights from your computer.

- > USB 2.0 support with status LED
- > 1500V full isolation
- > RDM enabled + Input or Output mode
- > Internal frame buffer for stable DMX generation
- > Widely supported by a huge range of commercial and free software

DATA IN

USB

RDM

DATA OUT



DMX

RDM

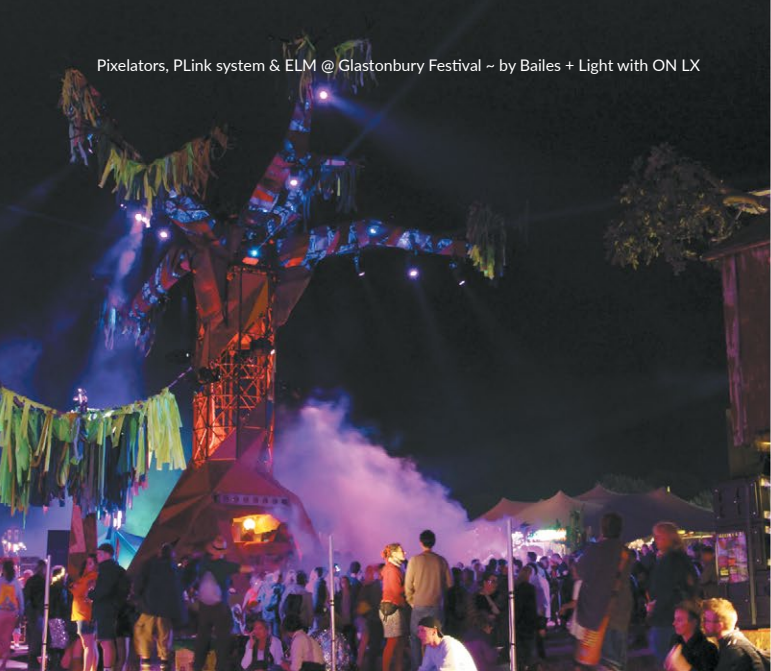


DMX USB

device comparison

Features ↓	OPEN DMX USB	DMX USB PRO
Part # (SKU)	70303	70304
Max Output Channels	512 Channels	512 Channels
DMX Out	Yes	Yes
DMX In	No	Yes
DMX Connector Type	5 pin DMX	5 pin DMX
Included Accessories	USB Cable	USB Cable
On-board Processing (timing and signal)	No. Dependent on the processing capabilities of your computer	Yes
Data & Power Line Isolation	No	1500V Isolation
Upgradeable Firmware	No	Yes
RDM Enabled	No	Yes. Requires firmware v2.4
User Configurable (via PRO-Manager) Refresh Rate (1 to 40 Hz) Break Time (96 uS to 1.3 mS) MaB (10.6 uS to 1.3 mS)	No	Yes
Ability to Manage, Test, & Update (via PRO-Manager)	No	Yes
Standalone Playback	No	No
Choose your own lighting software?	Yes	Yes
Who is it for? →	<ul style="list-style-type: none"> > Students > Novice users > Amateur productions > Troubleshooters 	<ul style="list-style-type: none"> > Community theatres > Audiovisual productions > Nightclubs > Art installations > Events > Musicians 

Pixelators, PLink system & ELM @ Glastonbury Festival ~ by Bailes + Light with ON LX



Pixelator Minis / PLink system @ Electric Picnic Festival, Ireland ~ by Luke Maguire



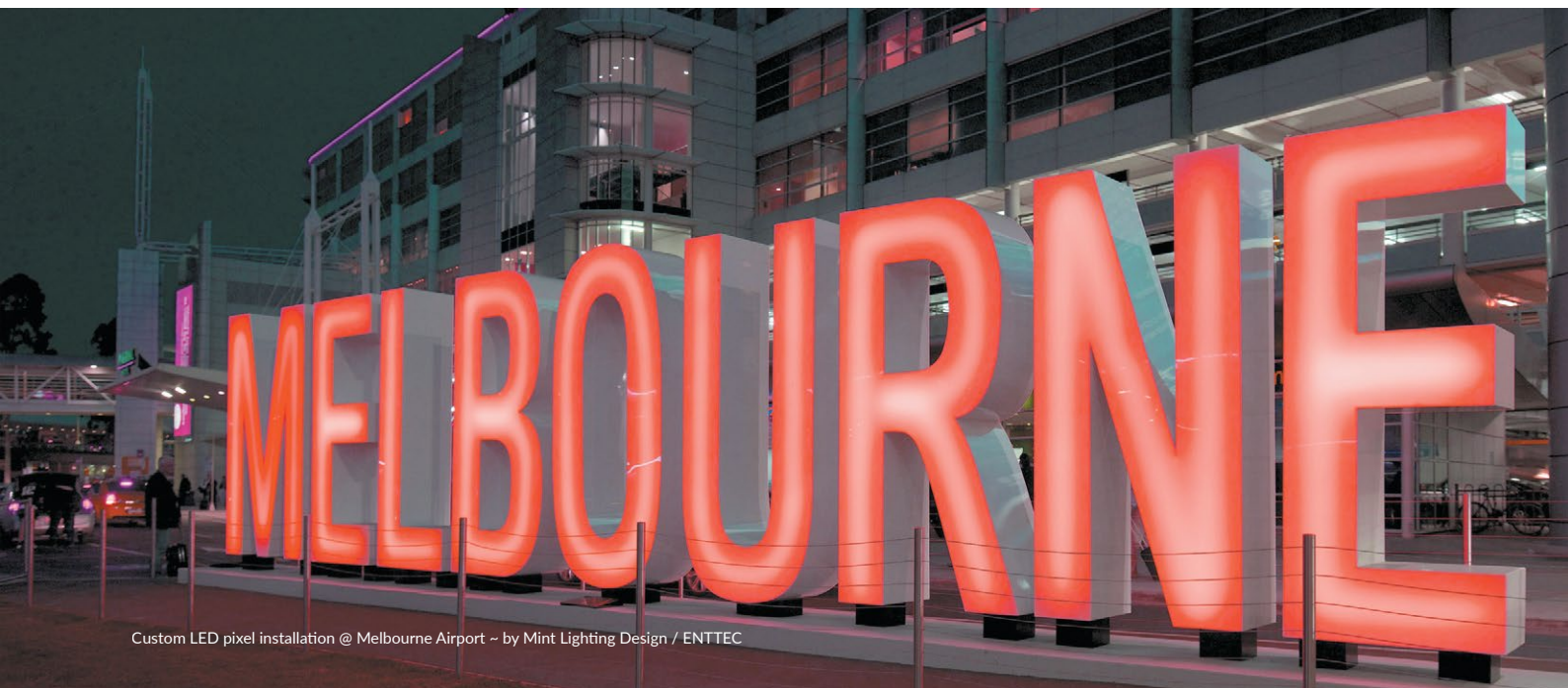
ELM @ Electric Daisy Carnival, Las Vegas ~ by KrohTech



ENTTEC pixel dots / PLink system / Pixelator Mini @ Australian Open, Melbourne ~ by Landor / The P.A. People



Pixelator / PLink system @ We Are FSTVL Festival ~ by This is Loop



Custom LED pixel installation @ Melbourne Airport ~ by Mint Lighting Design / ENTTEC

Next-Gen DMX lighting control for DJs + live musicians.

ENTTEC, have worked alongside top musicians and audio engineers to bring you this state-of-the-art software designed to take your live performances to a new level.

By combining sound with light, you'll be able to create a fully-immersive experience for your audience and stay ahead of the competition ... without having to employ a lighting operator. It'll change the way your audience sees you forever.

Even with no previous stage lighting experience, EMU is easy to use and will quickly give you the power to create outstanding atmospheres and visual effects to enhance your music, letting you focus on what you do best: hitting the right notes and putting on a good show!



emu
SKU: 70680

VST3 PLUGIN

Works with:

Ableton Live



+ more

EMU offers a Windows 32-bit or macOS 64-bit VST plugin capable of syncing the master playback state from your favourite DAW with the main EMU application, controlling program and bank changes directly from your DAW.

REACTION TO LIVE AUDIO

EMU's Sound Tracker functionality allows you to set your lights to react directly to live audio in certain programs by taking an audio input from a soundcard, microphone or virtual loopback adapter to accentuate and give particular elements of your show an even greater impact.

EMU is a state-of-the-art, intuitive software package designed for live musicians to run automated or responsive light shows.

- > Modern UI design: easy to learn, simple to use
- > Tempo-based to sync with your music
- > Visual attribute manager for fast show programming
- > Outputs 1 DMX universe (512 channels) connected using a DMX USB Pro or Art-Net
- > Control any DMX512 fixture: cloud-based database updated weekly
- > VST plugin to control EMU from a DAW
- > MIDI input to change program
- > Footswitch input for easy operation on stage
- > Flexible licencing options

DATA IN



DATA OUT



PLATFORMS



RECOMMENDED SYSTEM REQUIREMENTS: Mac: OSX 10.13 or later, Dual core 2 GHz processor or better, 4GB memory, 1024×768 display (min.). **Windows:** Supports Windows 8/8.1/10. Dual core 2 GHz Processor or better, 4GB memory, 1024×768 display (min.).



Lighting control for musicians

.....
f e a t u r e s

Hardware-style interface

Designed with live performances in mind, EMU's hardware-style user interface is quick to learn and easy to use. EMU's intuitive, tempo-based approach allows for the synchronisation of lighting and music with oscillators in real time.

With features such as lock, invert, duplicate and a visual attribute selector along with a number of handy keyboard shortcuts, building your show is a breeze. Create static looks, dynamic chases & moving effects using virtual sliders to control each light's parameters.

Thanks to its 'bank and program'-based logic to store each look, EMU makes it familiar and easy for musicians to enter the world of lighting control without a steep learning curve.



■ CONTROL ANY DMX-512 FIXTURE

Whether you want to control LED washes, moving heads, dimmer packs, smoke machines, scanners, moonflowers ... you name it, you can control them using EMU's DMX or Art-Net output.

ENTTEC has partnered with Crescit to give EMU a leading fixture library that receives regular updates. Crescit is a company with a background

in developing software to help professional lighting designers research, compile, manage and share production information and endeavours to add all known fixtures to their database.

With Crescit's vast fixture library integrated into EMU, this makes laboriously creating custom fixture profiles to control your equipment a thing of the past.

MIDI integration

EMU's MIDI learn functionality allows controls to be mapped to physical MIDI control hardware or software applications with the use of a virtual MIDI loopback adaptor. When EMU has been linked to a MIDI input, toggling between the previous / next program or bank with external software is easy.

For users that want more direct control over every attribute in their show, EMU allows individual faders to be mapped to MIDI to control their level in real time for precise detail.

For those taking advantage of EMU's inbuilt oscillators, tap tempo can be set through MIDI CC or a MIDI clock signal can be used to set the global speed to synchronise all show file oscillators in real time.

What else do I need?

You'll need a USB -> DMX interface or Art-Net node to connect lights to your computer. EMU works with ENTTEC's DMX USB Pro and Art-Net nodes.



Control DMX lights with an OP-Z multimedia synth!

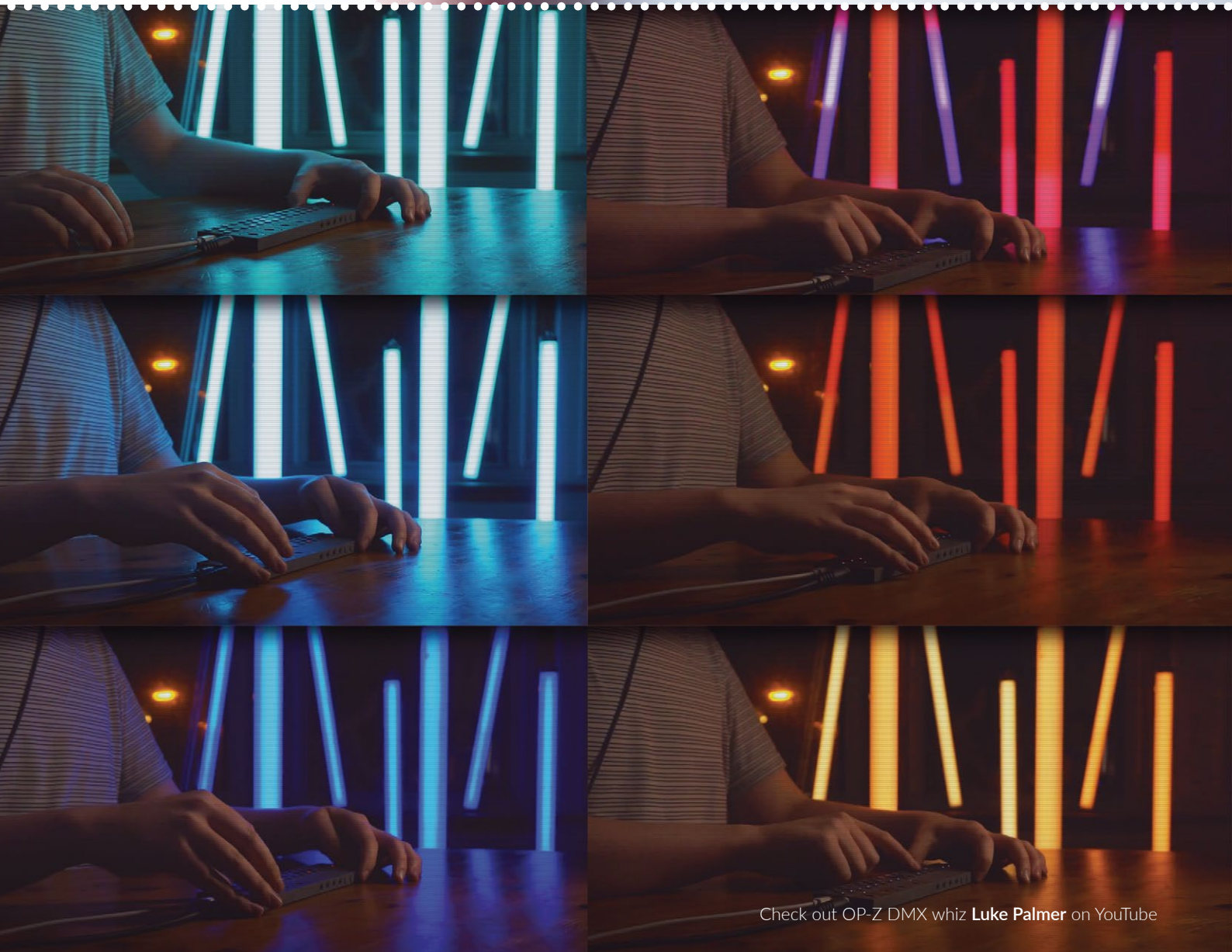
Aside from being able to make some cool sounds, one of the most pioneering features of teenage engineering's popular OP-Z multimedia synthesizer and sequencer is its ability to output DMX protocol in order to control lighting that can sync with your beats and visually take your performance to the next level.



To make this happen, grab yourself an ENTTEC DMX USB PRO - the only lighting interface recommended by teenage engineering.

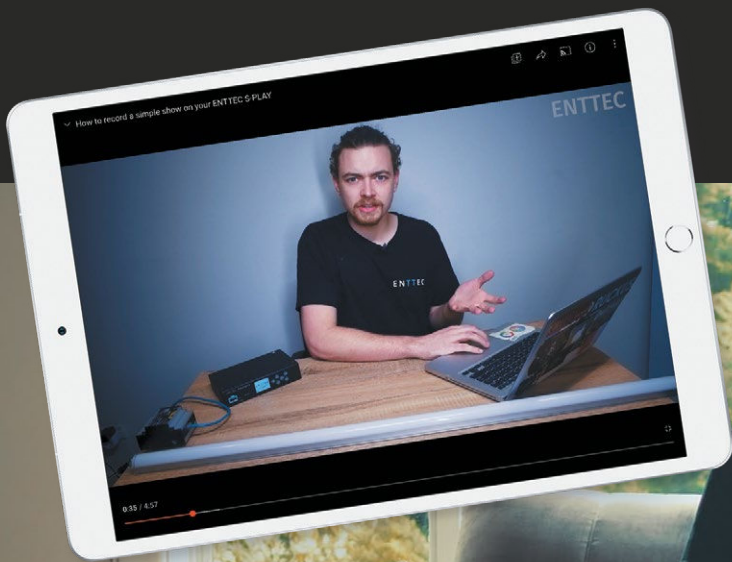


Learn how it's done @ [enttec.com](https://www.enttec.com)



Check out OP-Z DMX whiz **Luke Palmer** on YouTube

ENTTEC LED lighting control video tutorial series



"Just wanted to say thanks for all your videos - they are really appreciated. I've basically just binge watched the whole playlist and must admit I knew a lot of it, but it's good to remind oneself of all the points as well as pick up one or two new tips!"

Francois Ashton
Lighting designer



Say hello to Jordan, our intrepid Aussie electrical engineer.

As part of the R&D team at ENTTEC's Melbourne HQ, he gets to use his expert skills to solve a lot of problems and help design some of the LED and lighting control products that you all know and love. Jordan sure knows his stuff - and that's why we're excited to see him presenting our ongoing video tutorial series.

If you've ever wanted to learn the secret tips and tricks that professional lighting designers or installers use, simply join Jordan as he takes you through a variety of handy topics such as soldering, voltages, power supplies, fuses, software protocols and much more.

There's something for everyone, no matter what level of experience you have!



Watch now @  **YouTube.com/ENTTECOfficial**

This brochure is intended as an introductory guide to a number of core products from our constantly-evolving range.

Just as new products may become available and therefore not yet feature in this brochure, availability of existing products is also subject to change at any time, so please visit our website for the latest information.

Also, don't hesitate to contact us directly or ask your local dealer if you have any questions or require detailed technical specifications for any of the products featured within.

© ENTTEC 2024. While all reasonable care has been taken to ensure that the information presented within this publication is accurate as of the time of printing, it is intended as a guide only and ENTTEC shall not be held liable for any errors or omissions.

enttec.com
MELBOURNE AUS / LONDON UK / RALEIGH-DURHAM USA / DUBAI UAE