

PROLED FLEX STRIP WALL L15xxxx

Characteristics:

- SMD 3030 CHIP Super Warm White, Warm White, Neutral White or White
- Power supply 24 VDC, 18 W/m
- Plastic covering, square in grey or white
- Beam angle 30°, 45° or 60°
- Dimmable with optional drivers
- Protection class IP65 (End caps IP65 when correctly installed and glued)
- Operating temperature range -10° C till +45° C
- CE compliant with applicable European directives

Warning:

1. For indoor and outdoor use, as protection class IP65
2. Please ensure that the packaging is disposed of in a safe environment
3. Maximum 5m in one line possible
4. If cable is defected, do not use the luminaire
5. We do recommend that a qualified electrician should be used to install the products
6. Do not look at the lighted lamp directly

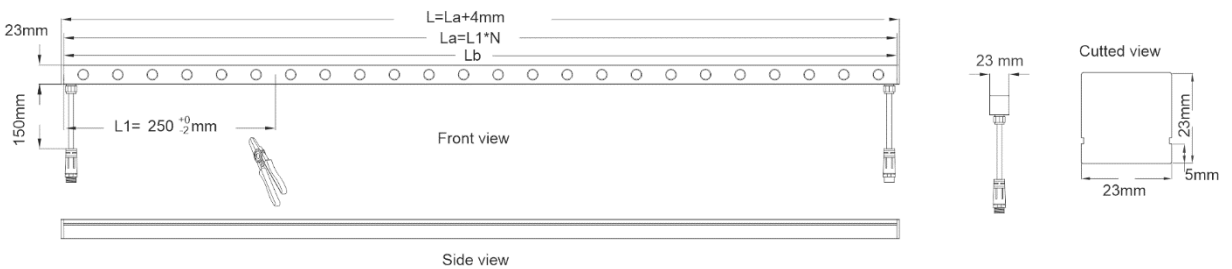
Safety indices:

Be sure to have a qualified electrician complete installation. The customer is not entitled to claim for any lights installed without observing European safety directives. The manufacturer is then discharged from liability when damage is caused by improper use or installation. If any luminaire is subsequently modified, the person responsible for the modification shall be considered as manufacturer. Do not cover lamp with heat-insulating materials. For indoor and outdoor use. Protection class IP65.

Installation:

1. Dimensions and length calculation at side input

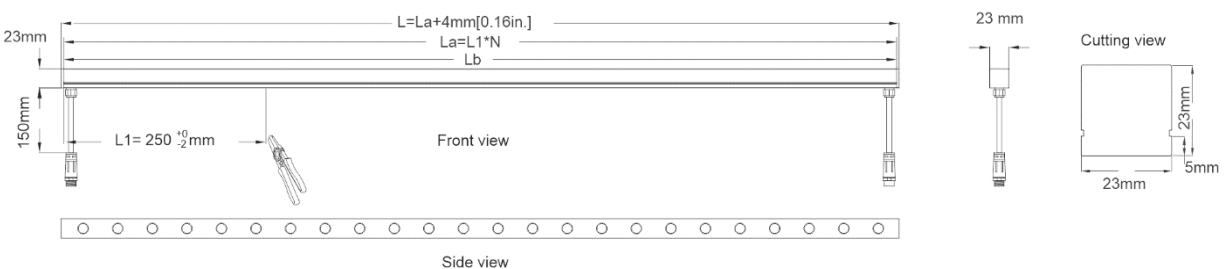
Input connector side (with female connector at both ends from factory)



L = Complete length Flex Strip Wall L_a = Length of Flex Strip Wall without end caps
 L1 = Minimum section length N = Amount of sections (1, 2, 3, ... , 20)

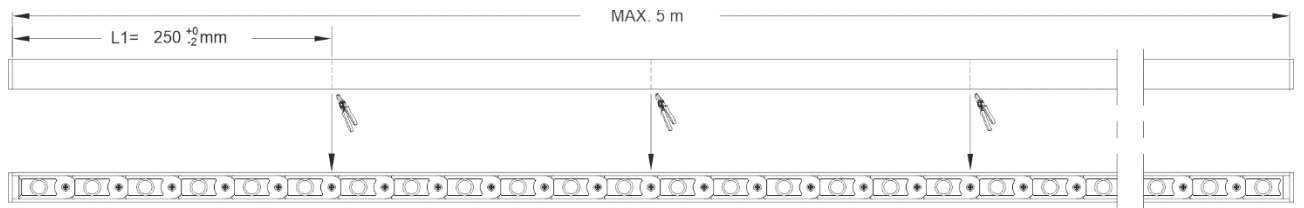
2. Dimensions and length calculation at bottom input

Input connector bottom (with female connector at both ends from factory)



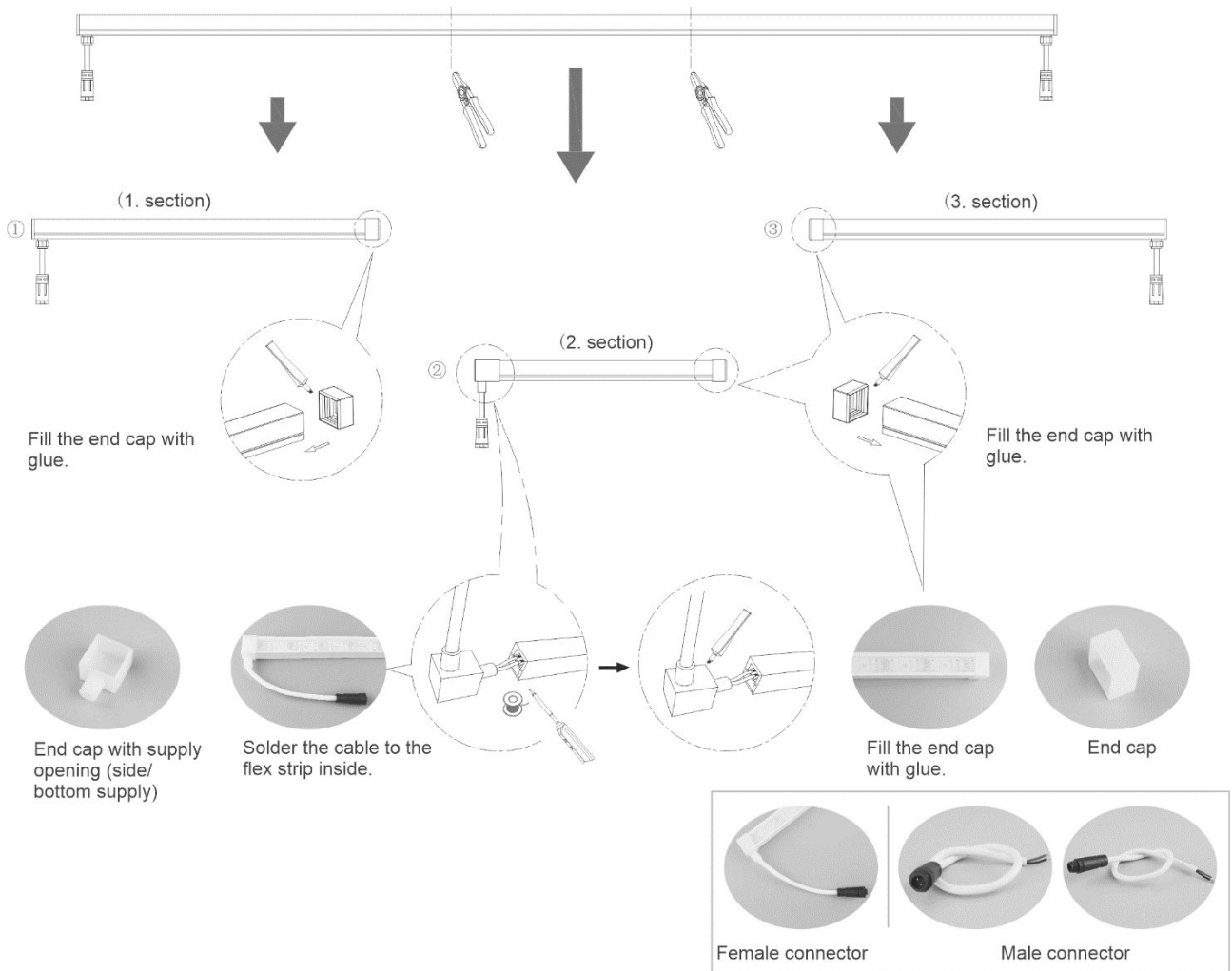
L = Complete length Flex Strip Wall L_a = Length of Flex Strip Wall without end caps
 L1 = Minimum section length N = Amount of sections (1, 2, 3, ... , 20)

3. Cutting (if needed)



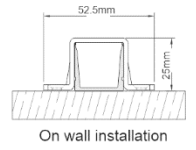
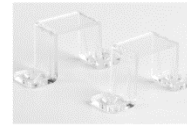
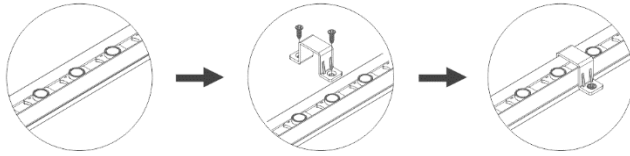
ATTENTION:

Before cutting FLEX STRIP WALL please remove it from power supply. Cut only at the marking points of sections at the back side of the strip (for example 3 sections).

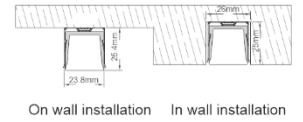
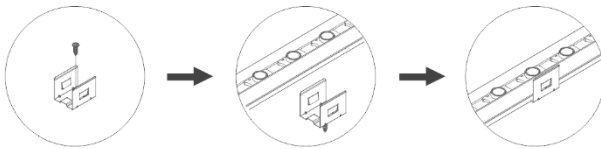


4. Fixing accessories

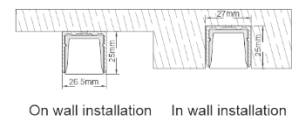
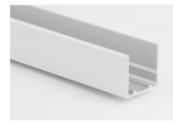
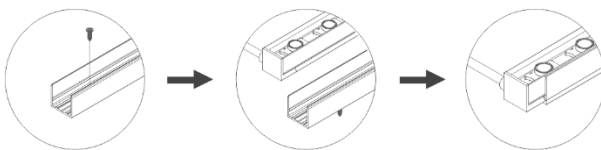
Fixing with transparent bracket



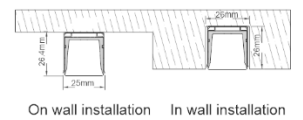
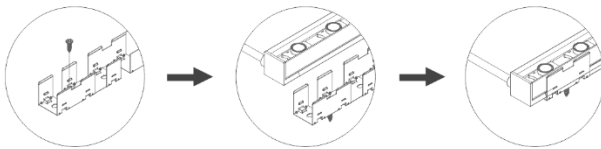
Fixing with bracket



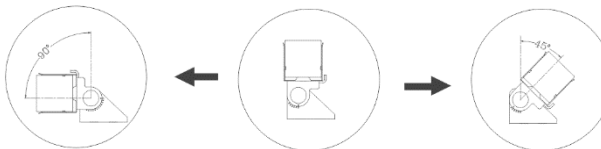
Fixing with aluminium profile



Fixing with bendable stainless steel profile



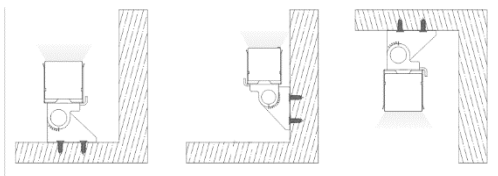
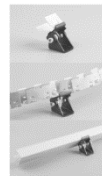
Fixing in combination with rotating brackets and bracket oder aluminium profile or bendable stainless steel profile



Max. 90° to the back

Horizontal

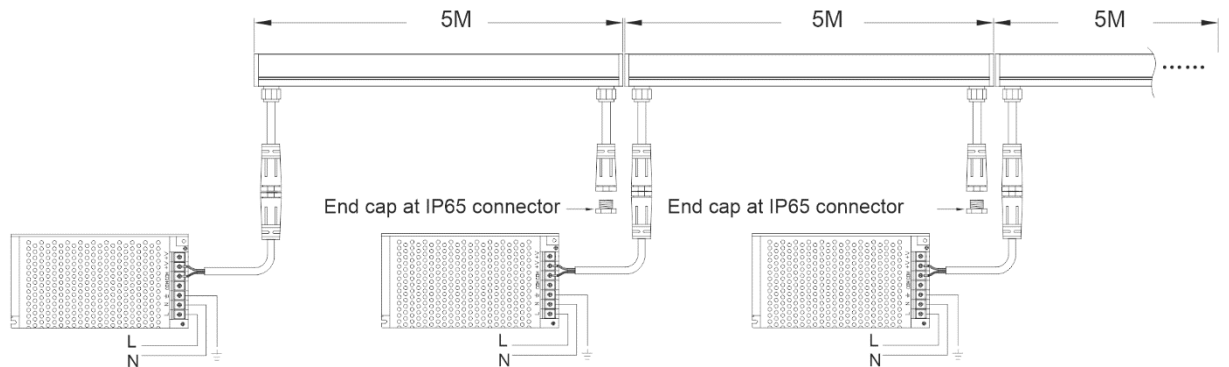
Max. 45° to the front



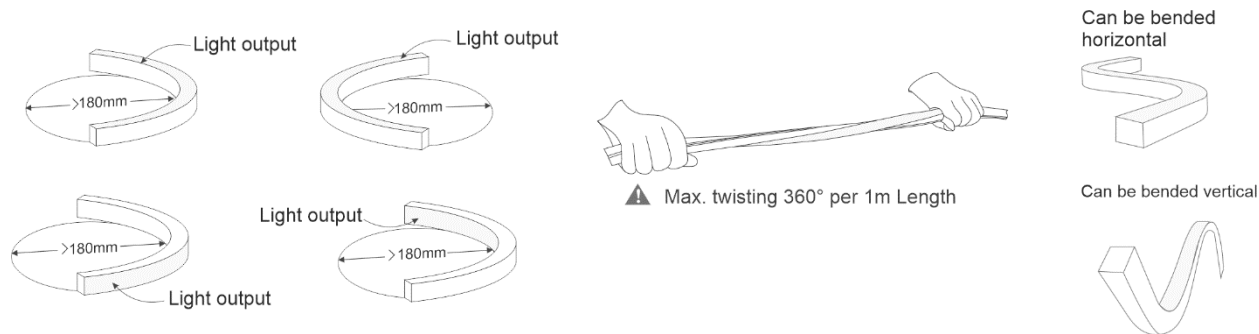
Possible installations

5. Connection diagram

Not dimmable connection



6. Hints for bending Flex Strip Wall



Energy efficiency class of the light source:

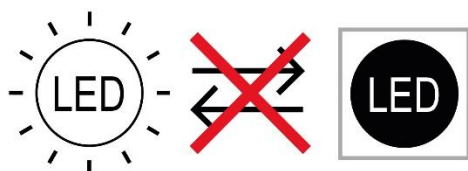
Products listed in this manual contain a light source of energy efficiency class: E.

ATTENTION:

Installation and commissioning may only be performed by qualified persons.
 National installation regulations must be observed.
 Luminaires must be disconnected from mains before any work.

The product is a “containing product” according to directive (EU) 2019/2020 and (EU) 2019/2015.
 The light source is an integral part of the containing product. Separating of light source and containing product results in irreversible damage. Exchange of the light source with commonly available tools is not useful for this product.

The installed light source can be removed for testing purpose.
 The replacement of light source is not intended, as the containing product will be destroyed.



CE   **IP65**

06.22 Technical amendments reserved